



CALIFORNIA
ASSOCIATION
OF REALTORS®

Riverside County

Economic Profile

August 2010

The copyright laws of the United States (Title 17 U.S. Code) forbid the unauthorized reproduction of this report by any means, including facsimile or computerized formats. Copyright © 2010, CALIFORNIA ASSOCIATION OF REALTORS®

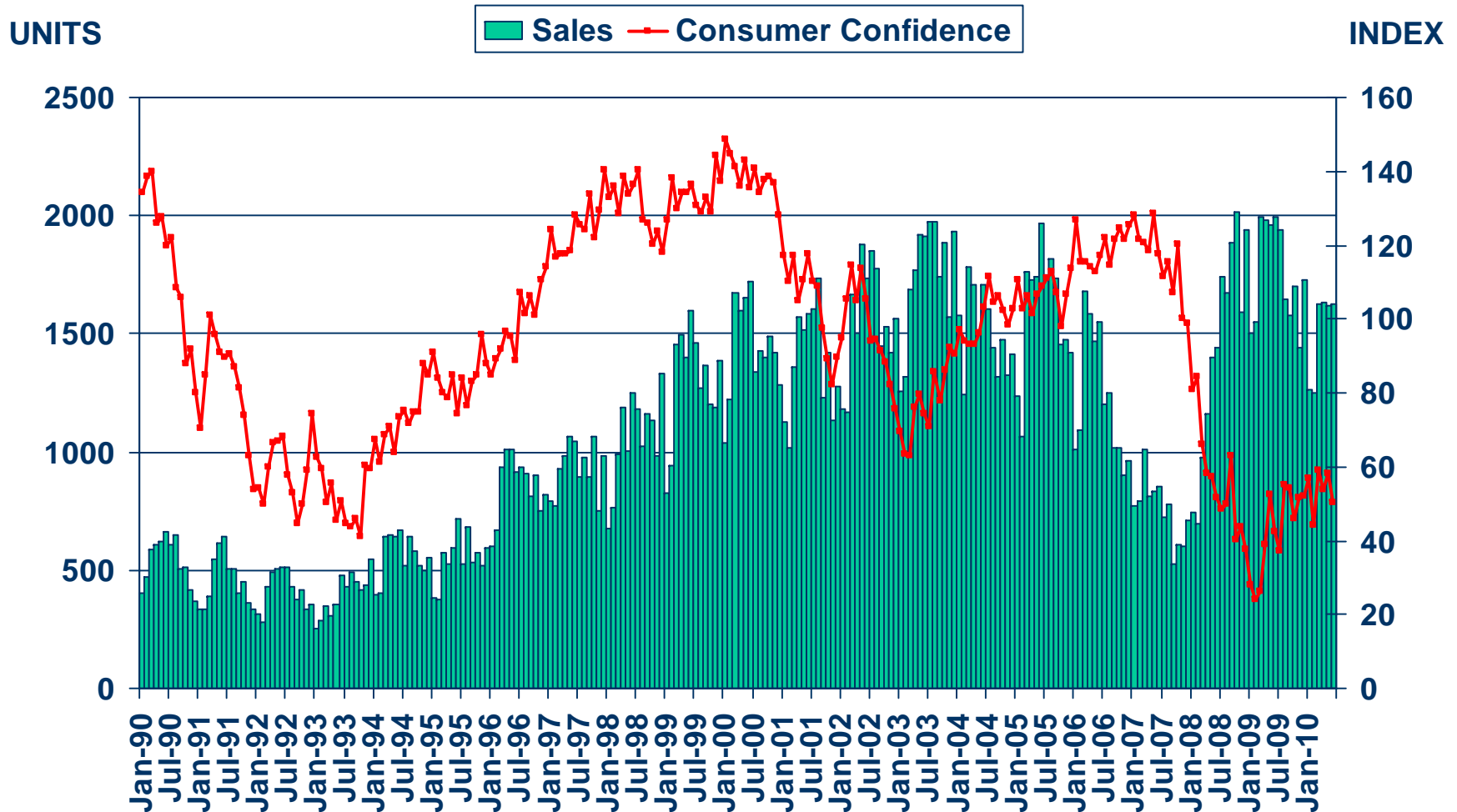
CALIFORNIA ASSOCIATION OF REALTORS®

Riverside County Profile

Characteristic	Statistic	State Rank
2007 Population Estimate	2,061,597	4
% Population Change 1990-2000	32.0%	4
% Population Change 1980-1990	76.48%	1
% White 2007	46.7%	
% Hispanic 2007	40.3%	
% Black 2007	6.3%	
% Asian & Pacific Islander 2007	4.5%	
2007 Per Capita Income	\$24,885	
2007 Median Household Income	\$58,145	
2007 Median Age	31.5	
Land Area Square Miles	7,207	4
2000 Total Establishments	26,565	8
2007 Civilian Employment	977,980	

Sales of Existing Detached Homes and Pacific West Consumer Confidence

Riverside County, June 2010: 1,627 Units, Down 18.0% YTD, Down 18.5% YTY

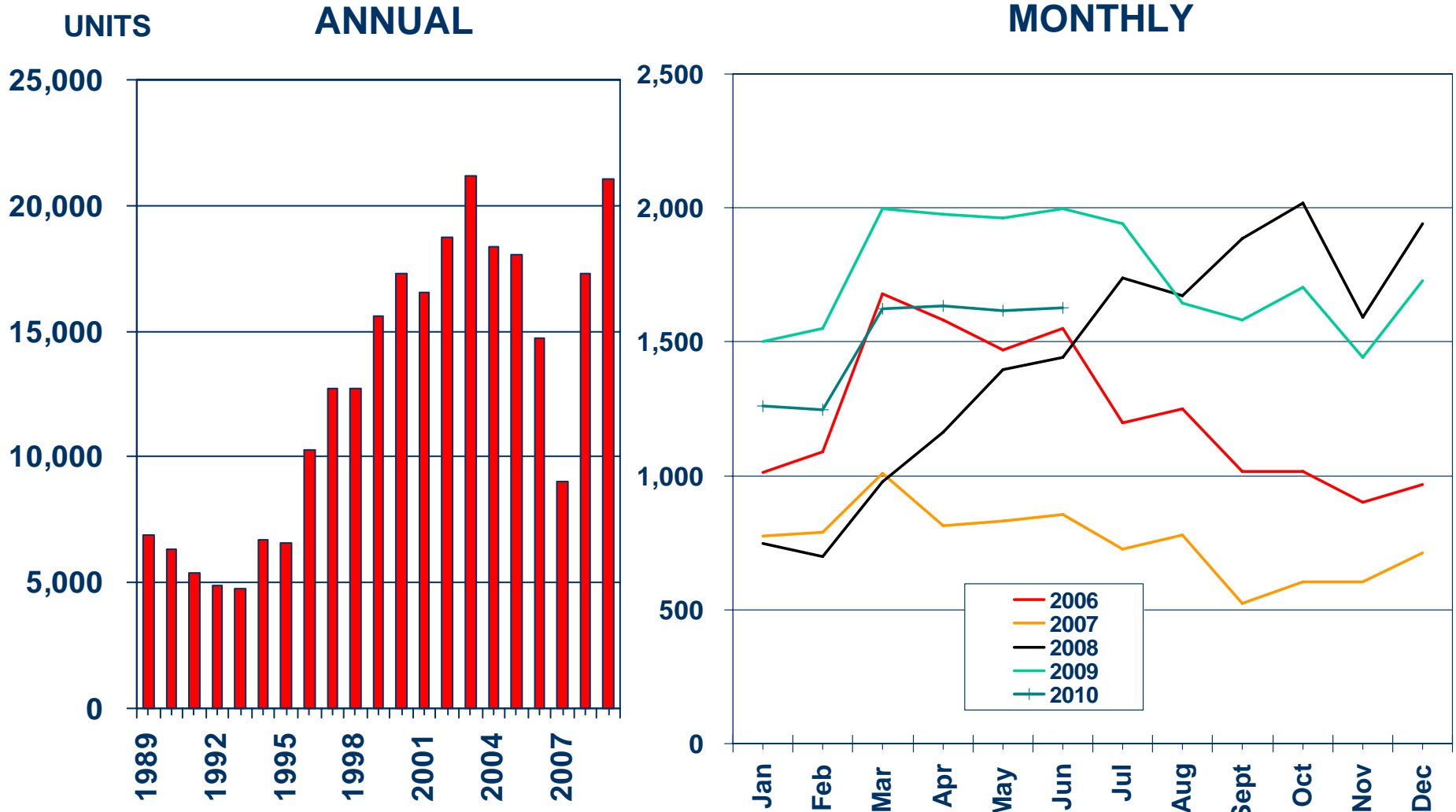


SOURCE: CALIFORNIA ASSOCIATION OF REALTORS®;
The Conference Board



Sales of Existing Detached Homes

Riverside County, 2009: 21,026 Units, Up 21.7% YTY

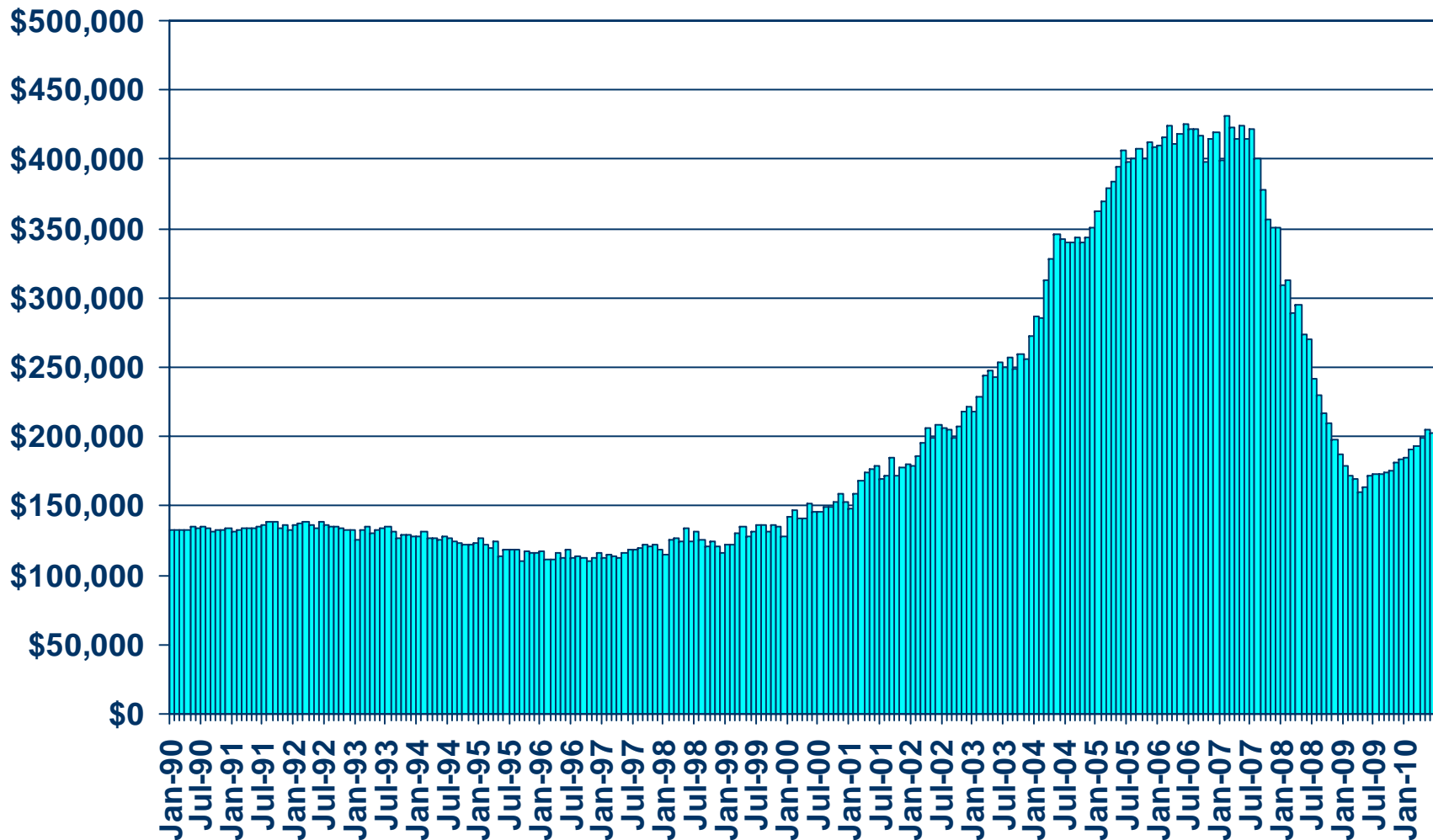


SOURCE: CALIFORNIA ASSOCIATION OF REALTORS®



Median Price of Existing Detached Homes

Riverside County, June 2010: \$202,850, Up 17.8% YTY



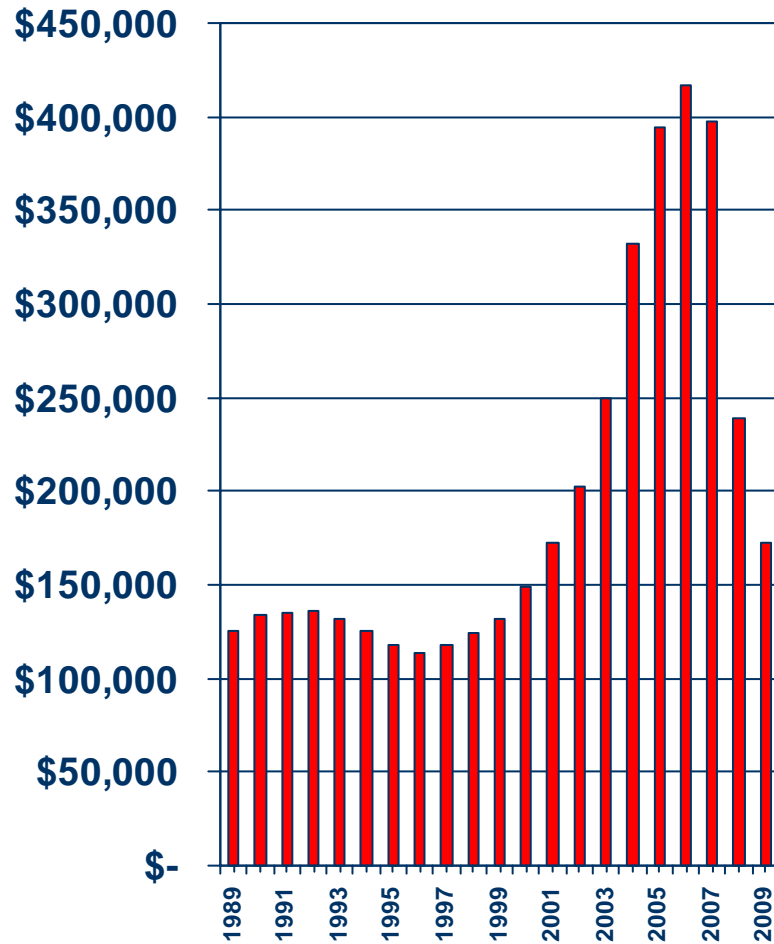
SOURCE: CALIFORNIA ASSOCIATION OF REALTORS®



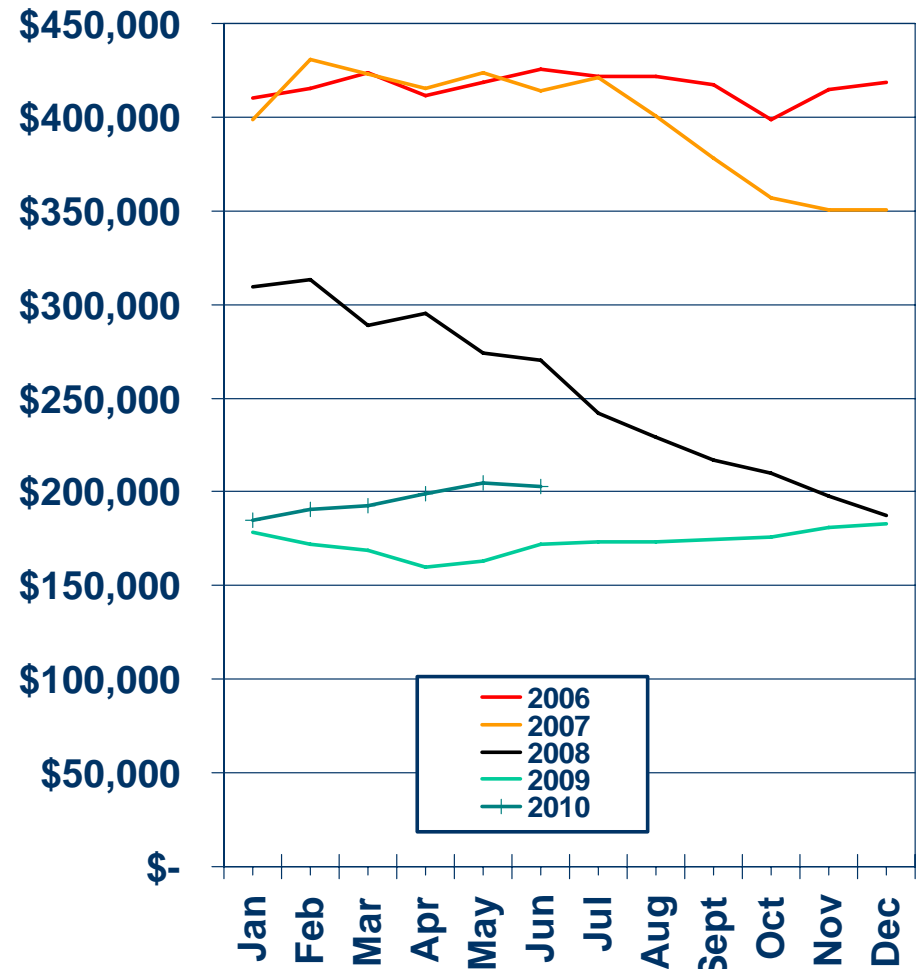
Median Price Annual Comparison

Riverside County, 2009: \$172,714, Down 27.7% YTY

ANNUAL



MONTHLY



SOURCE: CALIFORNIA ASSOCIATION OF REALTORS®



Median Home Sales Price

Riverside County

	Jun-10	Jun-09	Yearly % Change
Riverside County	\$210,000	\$185,000	13.5%
Banning	\$135,000	\$128,000	5.5%
Beaumont	\$205,000	\$215,000	-4.7%
Cathedral City	\$160,000	\$150,000	6.7%
Corona	\$344,000	\$300,000	14.7%
Desert Hot Springs	\$100,000	\$89,000	12.4%
Hemet	\$135,000	\$126,000	7.1%
Indio	\$180,000	\$185,000	-2.7%
La Quinta	\$350,000	\$367,000	-4.6%
Lake Elsinore	\$213,000	\$181,000	17.7%
Menifee	\$220,000	\$205,000	7.3%
Mira Loma	\$290,750	\$322,750	-9.9%
Moreno Valley	\$165,000	\$135,000	22.2%

SOURCE: C.A.R.; DataQuick Information Systems. The price statistics are derived from all types of home sales -- new and existing, condos and single-family.



Median Home Sales Price

Riverside County

	Jun-10	Jun-09	Yearly % Change
Murrieta	\$254,000	\$230,000	10.4%
Norco	\$311,250	\$335,000	-7.1%
Palm Desert	\$275,000	\$265,000	3.8%
Palm Springs	\$225,500	\$245,000	-8.0%
Perris	\$160,000	\$145,000	10.3%
Rancho Mirage	\$477,500	\$462,500	3.2%
Riverside	\$199,500	\$178,000	12.1%
San Jacinto	\$139,000	\$135,500	2.6%
Sun City	\$170,000	\$160,000	6.3%
Temecula	\$275,000	\$250,000	10.0%
Wildomar	\$228,000	\$230,000	-0.9%
Winchester	\$255,000	\$255,000	0.0%

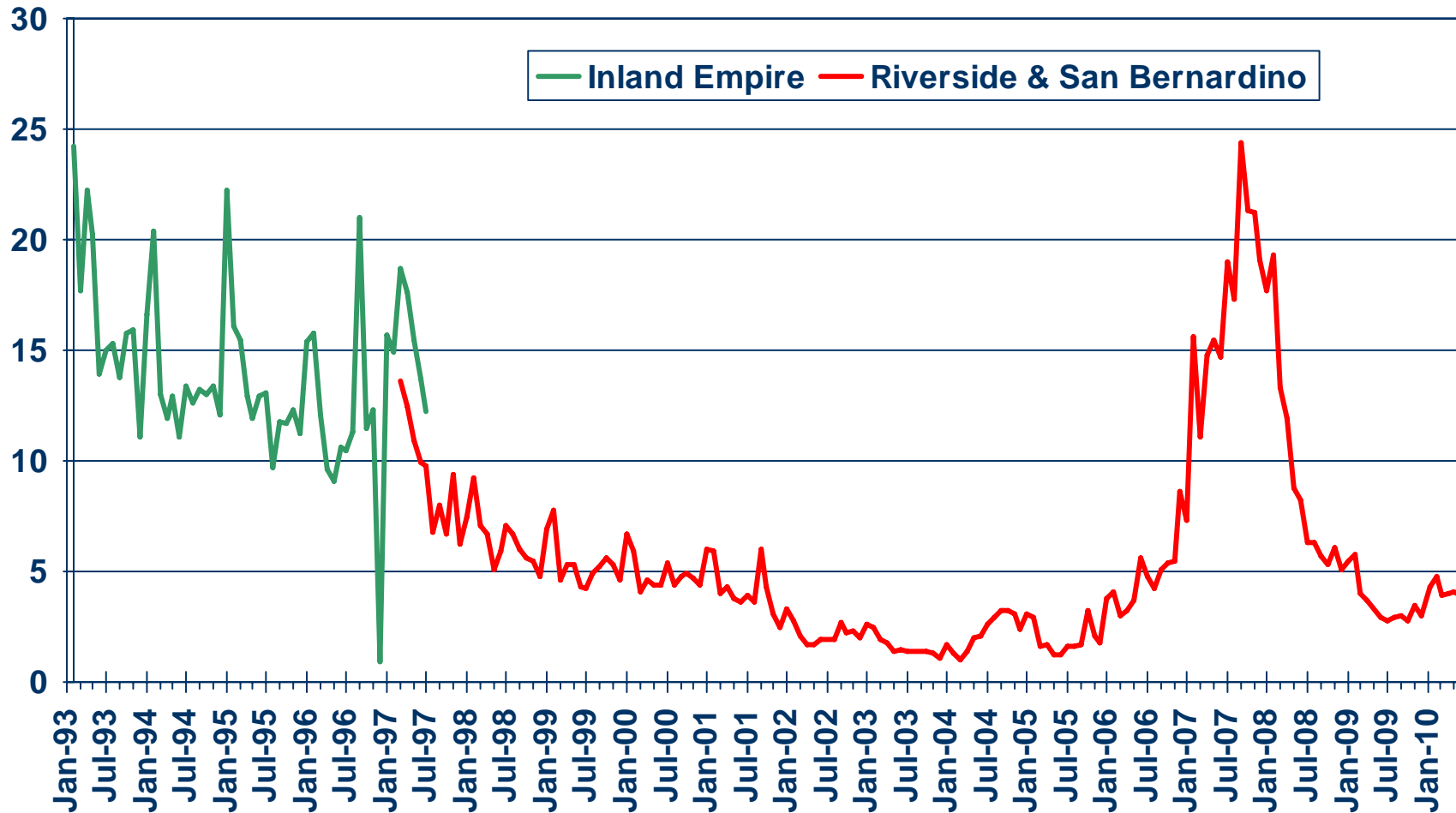
SOURCE: C.A.R.; DataQuick Information Systems. The price statistics are derived from all types of home sales -- new and existing, condos and single-family.



Unsold Inventory Index

Riverside and San Bernardino Counties, June 2010: 3.9 Months

MONTHS

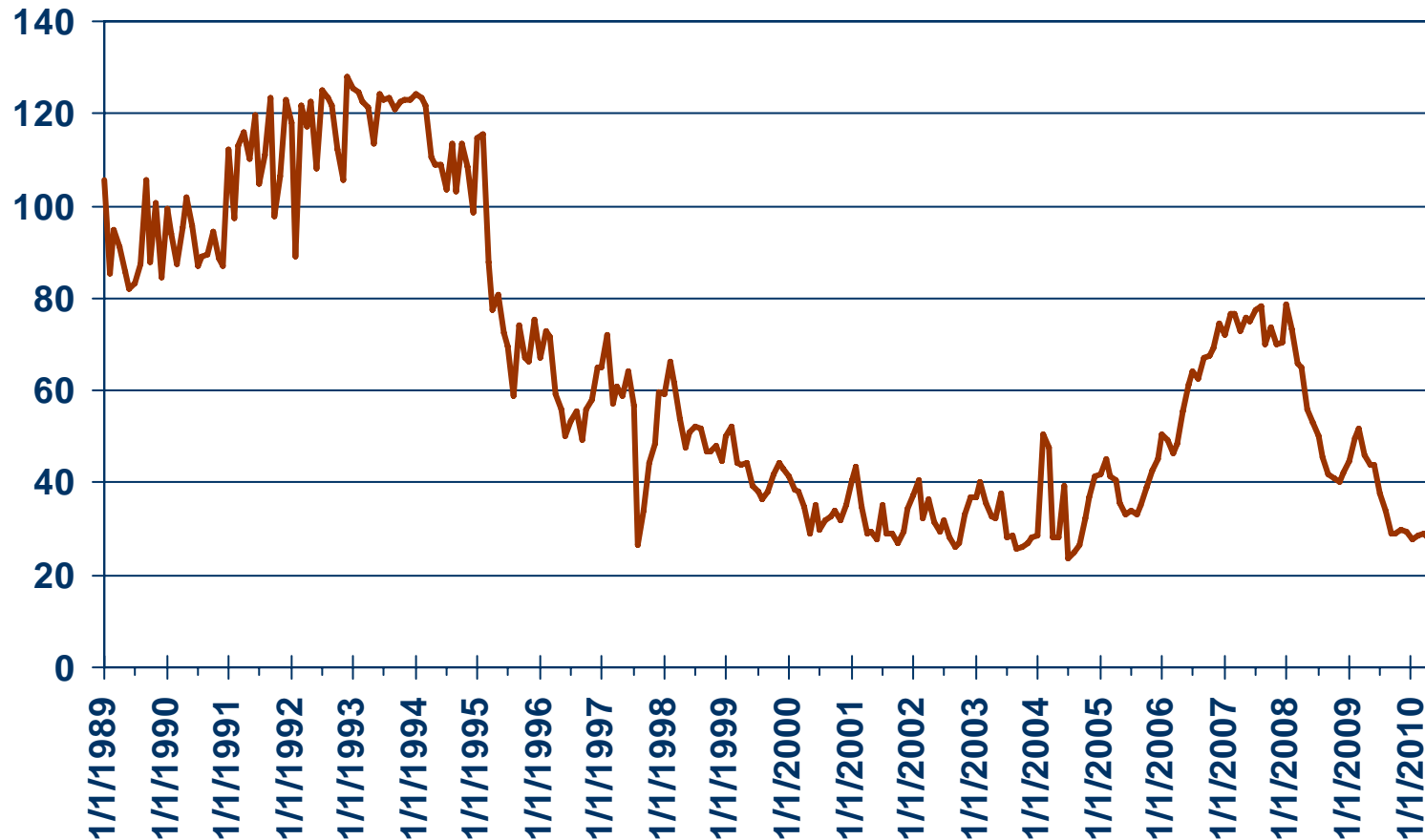


SOURCE: CALIFORNIA ASSOCIATION OF REALTORS®



Median Time on the Market

Single-Family Homes – Riverside/San Bernardino, June 2010: 34.3 Days

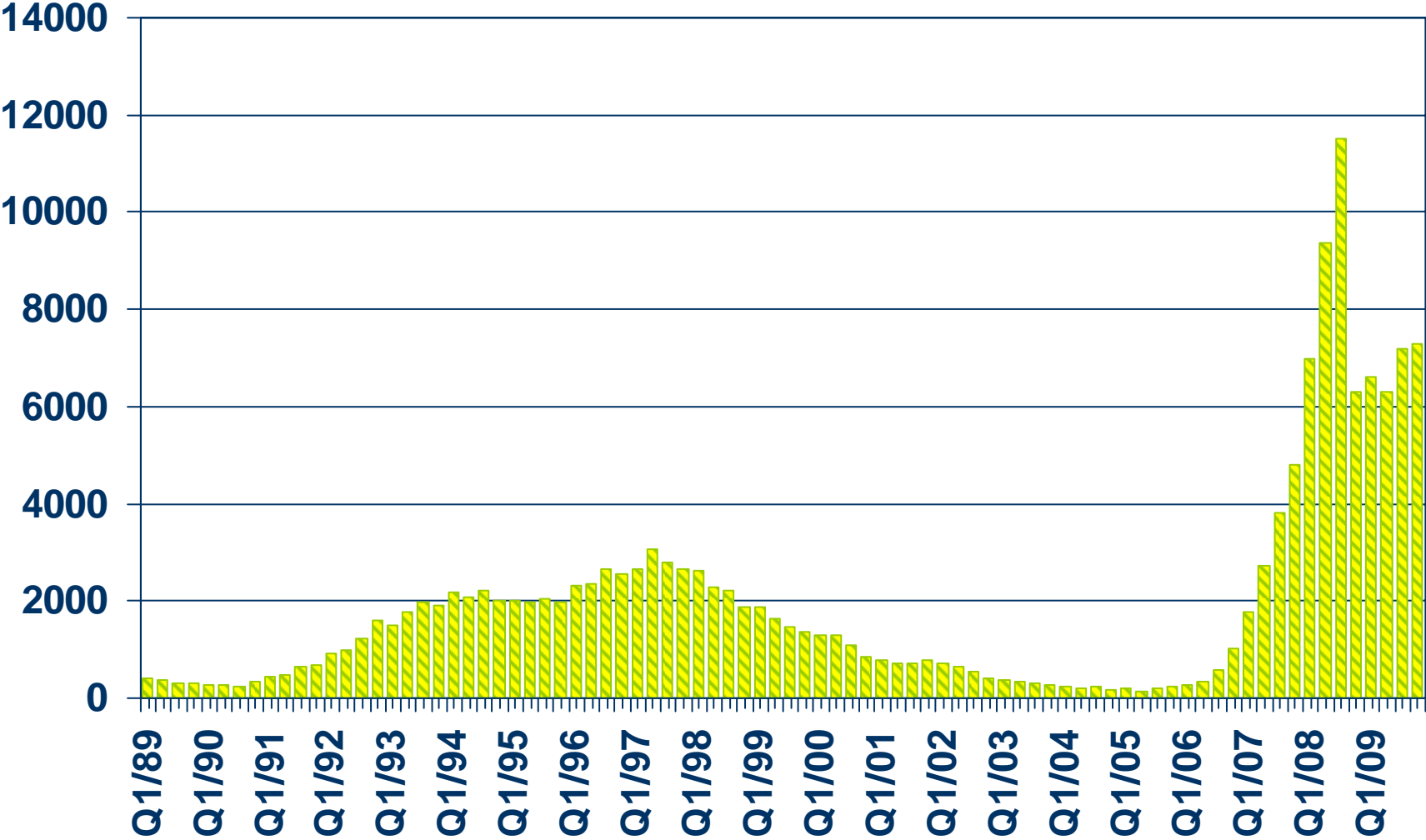


SOURCE: CALIFORNIA ASSOCIATION OF REALTORS®



Foreclosures

Riverside County

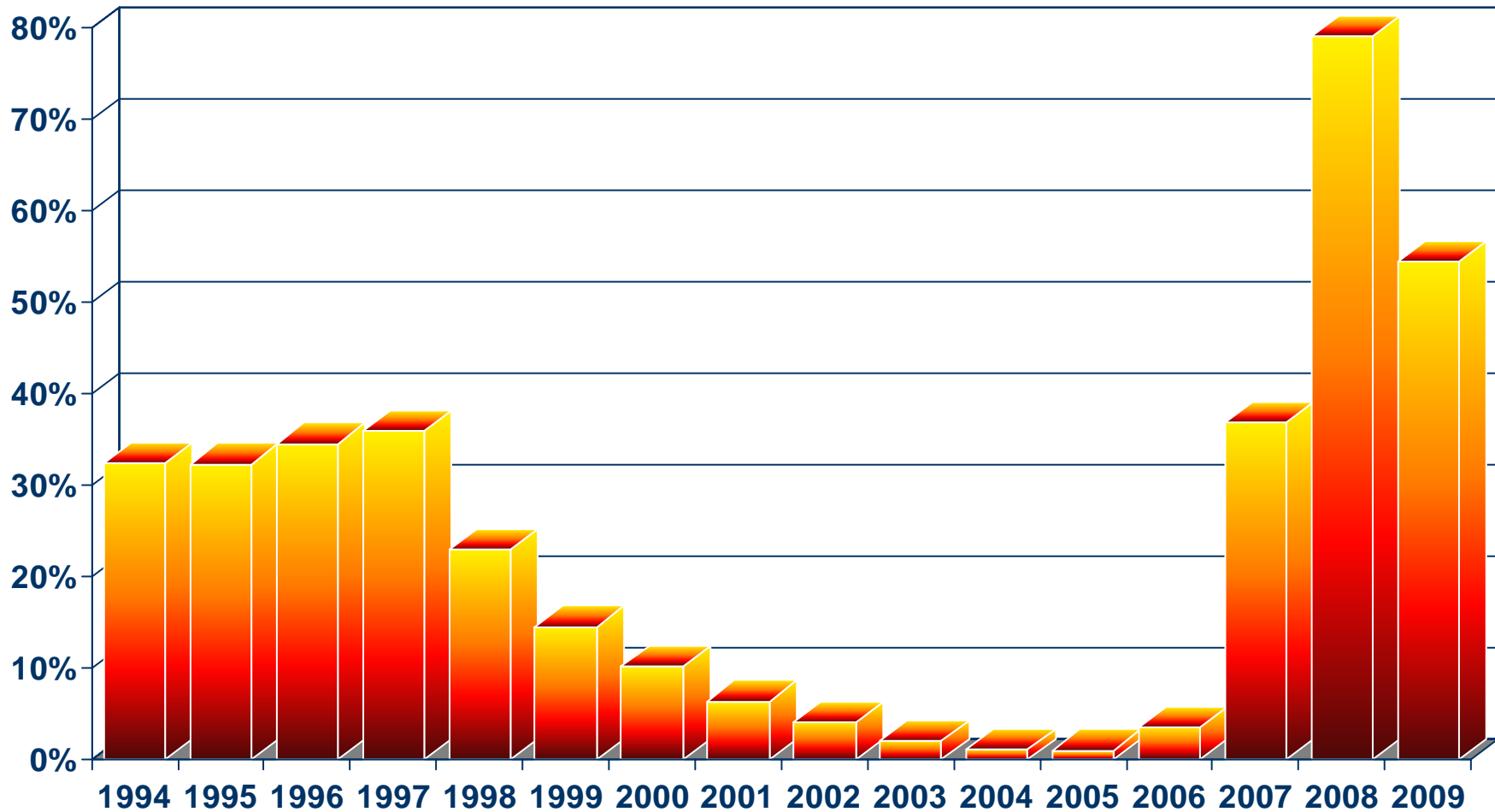


SOURCE: Real Estate Research Council



Ratio of Foreclosures to Home Sales

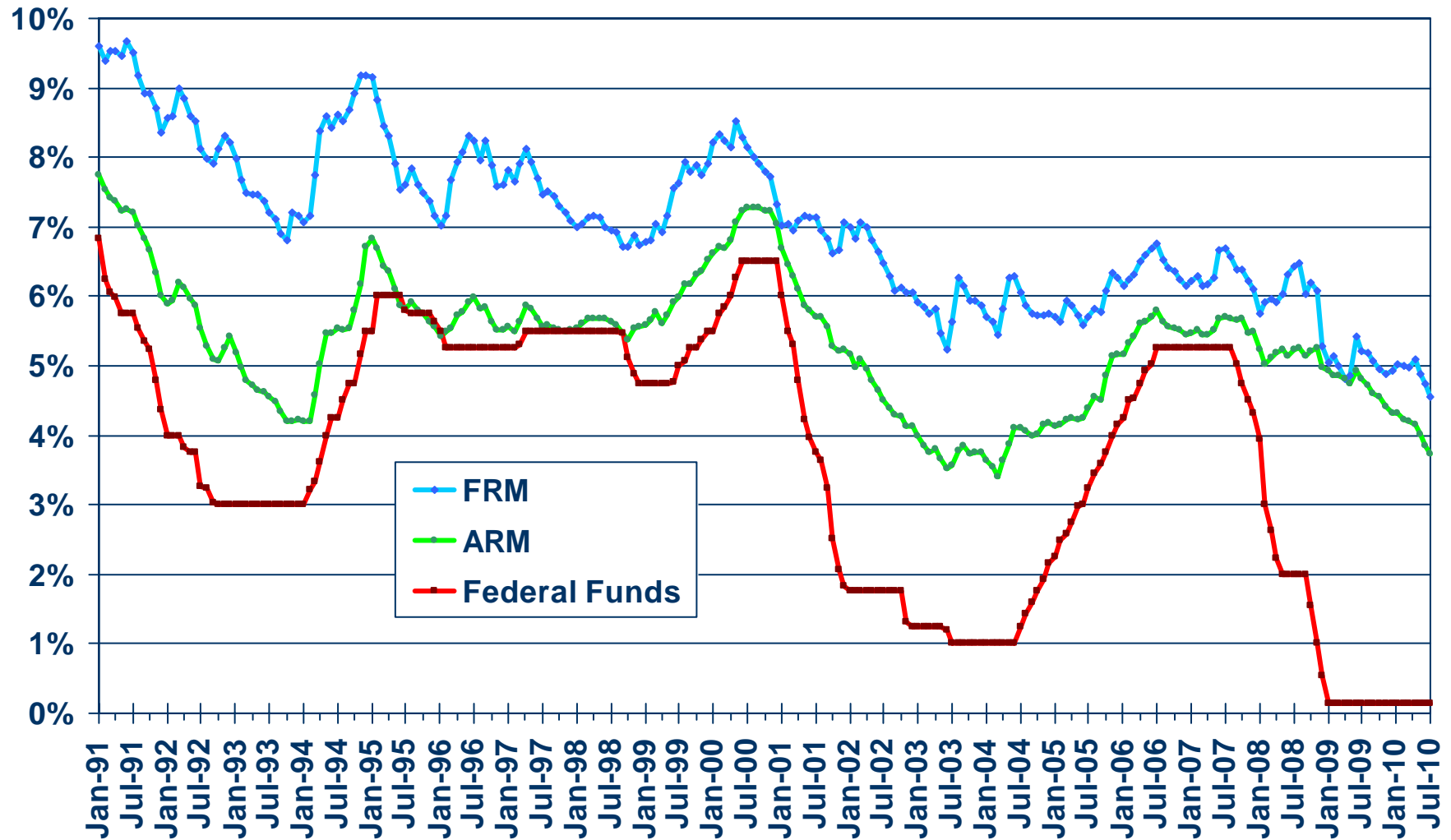
Riverside County



SOURCE: Real Estate Research Council



Mortgage Rates

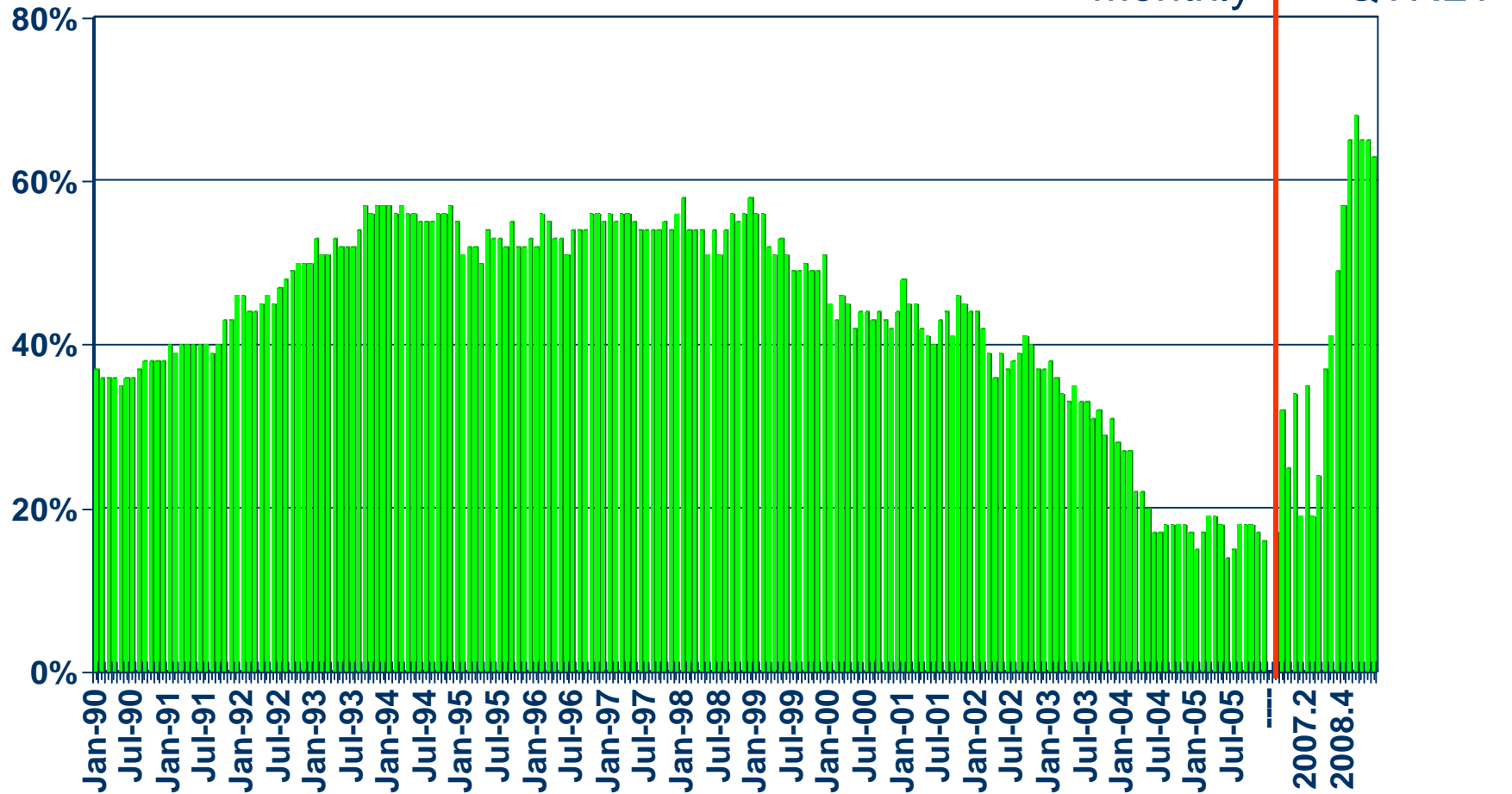


SOURCE: Federal Home Loan Mortgage Corporation

Housing Affordability Index

Riverside County, 1st Quarter 2010: 63%

% OF HOUSEHOLDS THAT CAN BUY

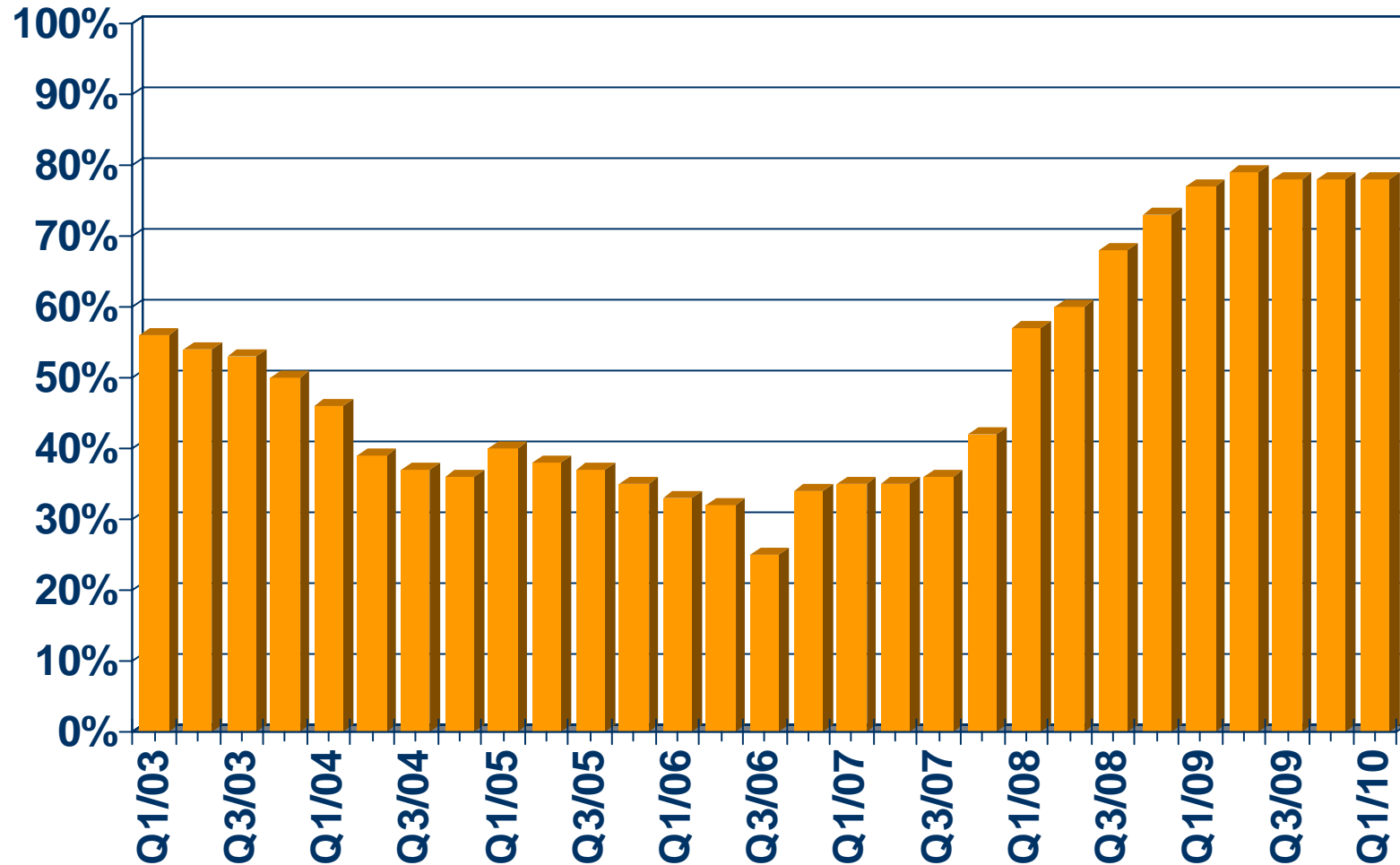


SOURCE: CALIFORNIA ASSOCIATION OF REALTORS®



First-time Buyer Housing Affordability Index

Riverside County, 1st Quarter 2010: 78%



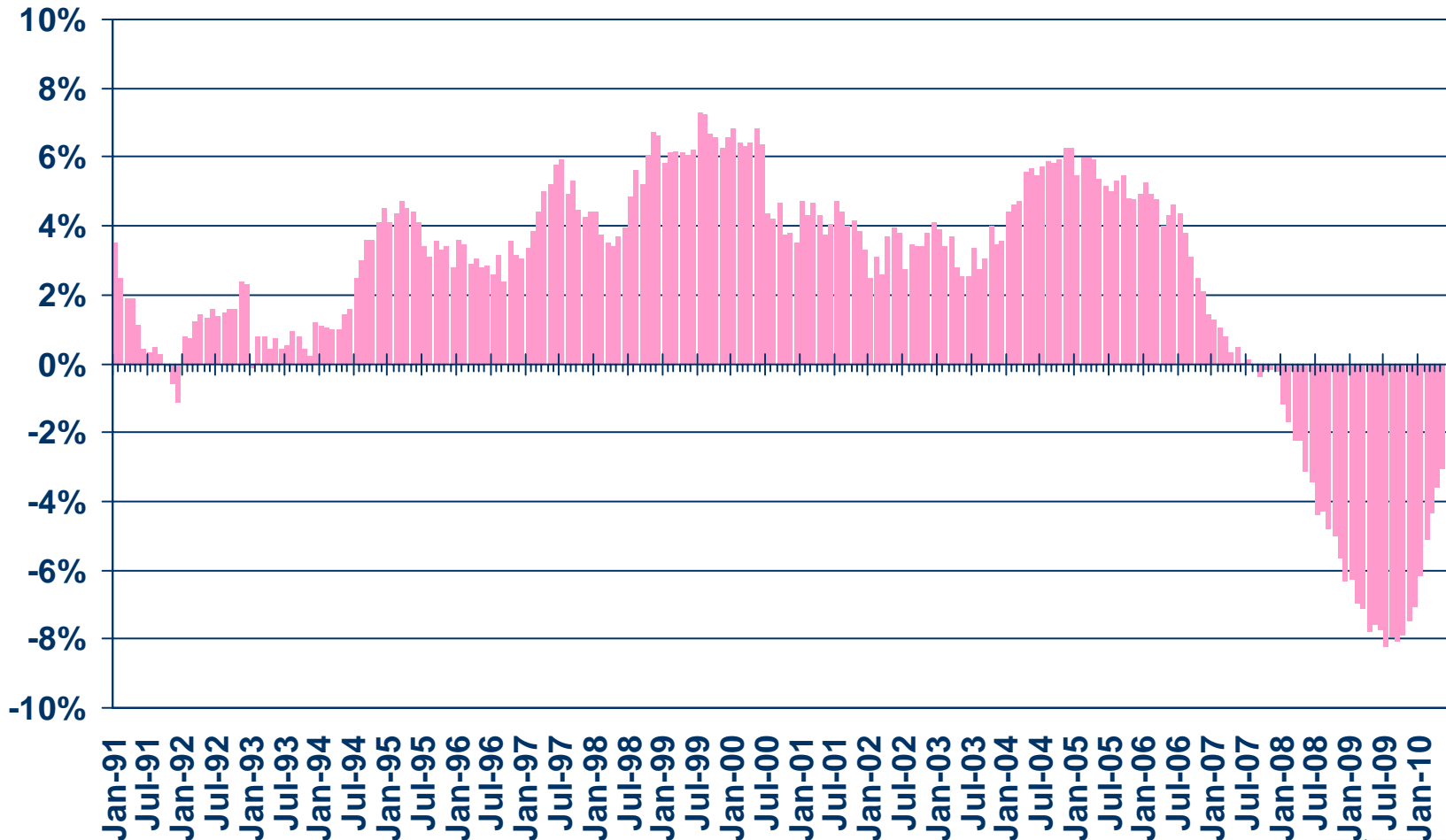
SOURCE: CALIFORNIA ASSOCIATION OF REALTORS®



Nonfarm Employment

Riverside/San Bernardino Metropolitan Area, June 2010: Down 2.8% YTY

Y-T-Y PERCENT CHANGE

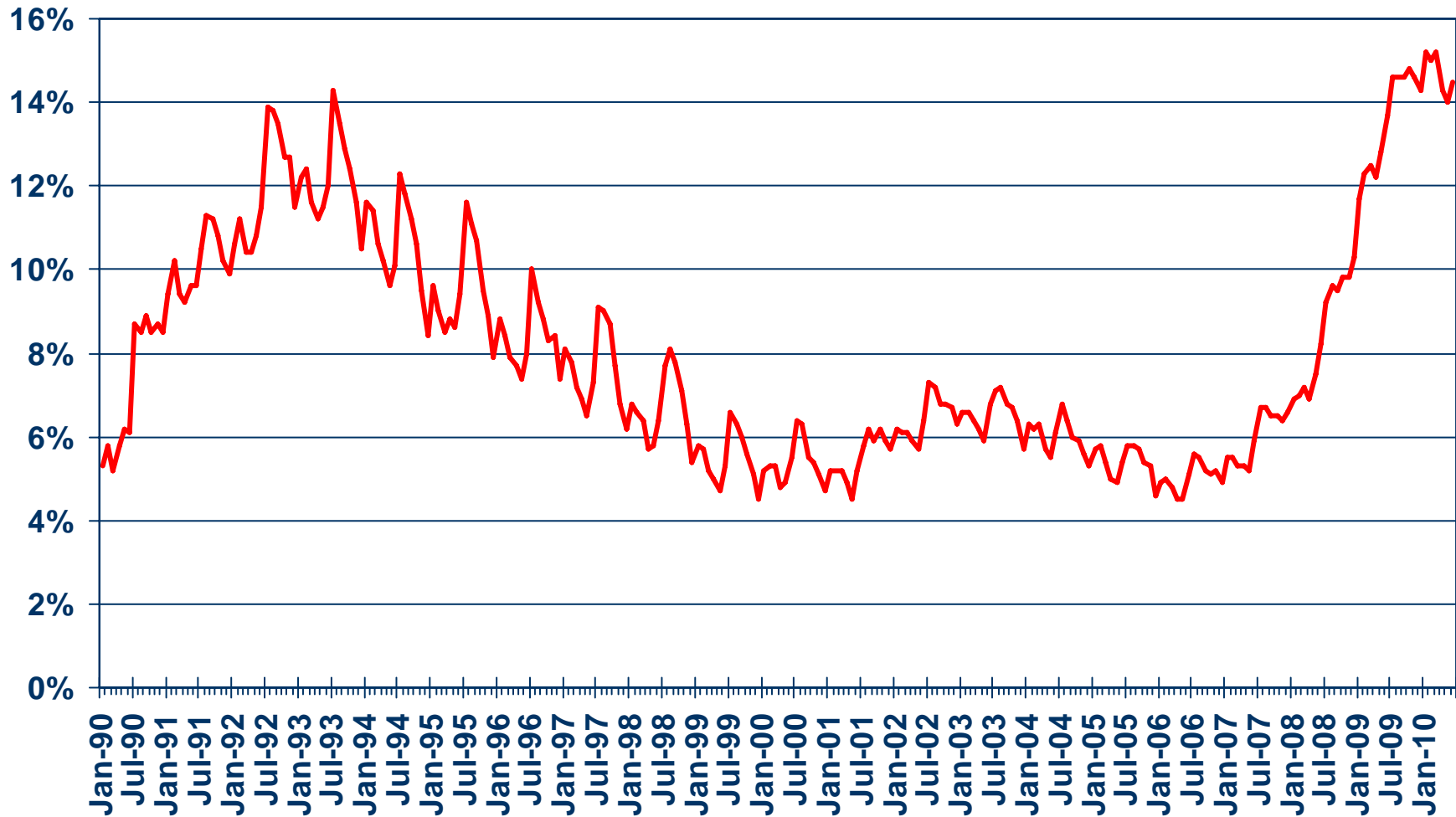


SOURCE: CA Employment Development Division



Unemployment Rate

Riverside County, June 2010: 14.5%



SOURCE: CA Employment Development Division



Unemployment Rate

Riverside County – June 2010

Area Name	Labor Force	Rate
Riverside County	913,200	14.5%
Banning city	11,700	16.5%
Beaumont city	6,800	16.5%
Bermuda Dunes CDP	4,300	6.8%
Blythe city	7,100	17.3%
Cabazon CDP	1,300	34.2%
Calimesa city	4,100	11.2%
Canyon Lake city	6,400	9.0%
Cathedral City city	26,200	14.2%
Cherry Valley CDP	3,300	13.0%
Coachella city	12,400	22.5%
Corona city	83,500	10.8%
Desert Hot Springs city	9,600	20.2%
East Hemet CDP	8,800	15.1%
El Cerrito CDP	3,000	16.3%
Glen Avon CDP	8,600	16.2%

SOURCE: CA Employment Development Department

CCD Census County Division
CDP Census Designated Place



Unemployment Rate

Riverside County – June 2010

Area Name	Labor Force	Rate
Hemet city	26,800	18.1%
Highgrove CDP	2,100	18.3%
Home Gardens CDP	5,800	15.9%
Homeland CDP	1,600	27.4%
Idyllwild Pine Cove CDP	2,600	18.8%
Indian Wells city	1,700	5.1%
Indio city	27,400	15.7%
La Quinta city	14,600	7.7%
Lake Elsinore city	17,200	14.1%
Lakeland Village CDP	3,400	22.6%
Lakeview CDP	1,000	17.2%
March AFB CDP	200	14.6%
Mecca CDP	3,500	28.0%
Mira Loma CDP	10,600	14.1%
Moreno Valley city	88,000	16.7%
Murrieta city	27,100	9.7%

SOURCE: CA Employment Development Department

CCD Census County Division
CDP Census Designated Place



Unemployment Rate

Riverside County – June 2010

Area Name	Labor Force	Rate
Murrieta Hot Springs CDP	1,100	18.0%
Norco city	13,600	11.9%
Nuevo CDP	2,400	11.9%
Palm Desert city	24,800	8.7%
Palm Springs city	26,100	11.4%
Pedley CDP	7,300	10.3%
Perris city	19,900	22.1%
Quail Valley CDP	1,000	22.8%
Rancho Mirage city	6,500	13.0%
Riverside city	160,600	14.6%
Romoland CDP	1,500	22.4%
Rubidoux CDP	17,400	20.3%
San Jacinto city	12,600	21.5%
Sedco Hills CDP	1,500	15.6%
Sun City CDP	6,300	15.5%

SOURCE: CA Employment Development Department

CCD Census County Division
CDP Census Designated Place



Unemployment Rate

Riverside County – June 2010

Area Name	Labor Force	Rate
Sunnyslope CDP	2,500	12.9%
Temecula city	36,400	10.0%
Thousand Palms CDP	2,500	10.2%
Valle Vista CDP	5,600	15.5%
Wildomar CDP	8,100	12.8%
Winchester CDP	1,500	21.0%
Woodcrest CDP	5,700	9.2%

SOURCE: CA Employment Development Department

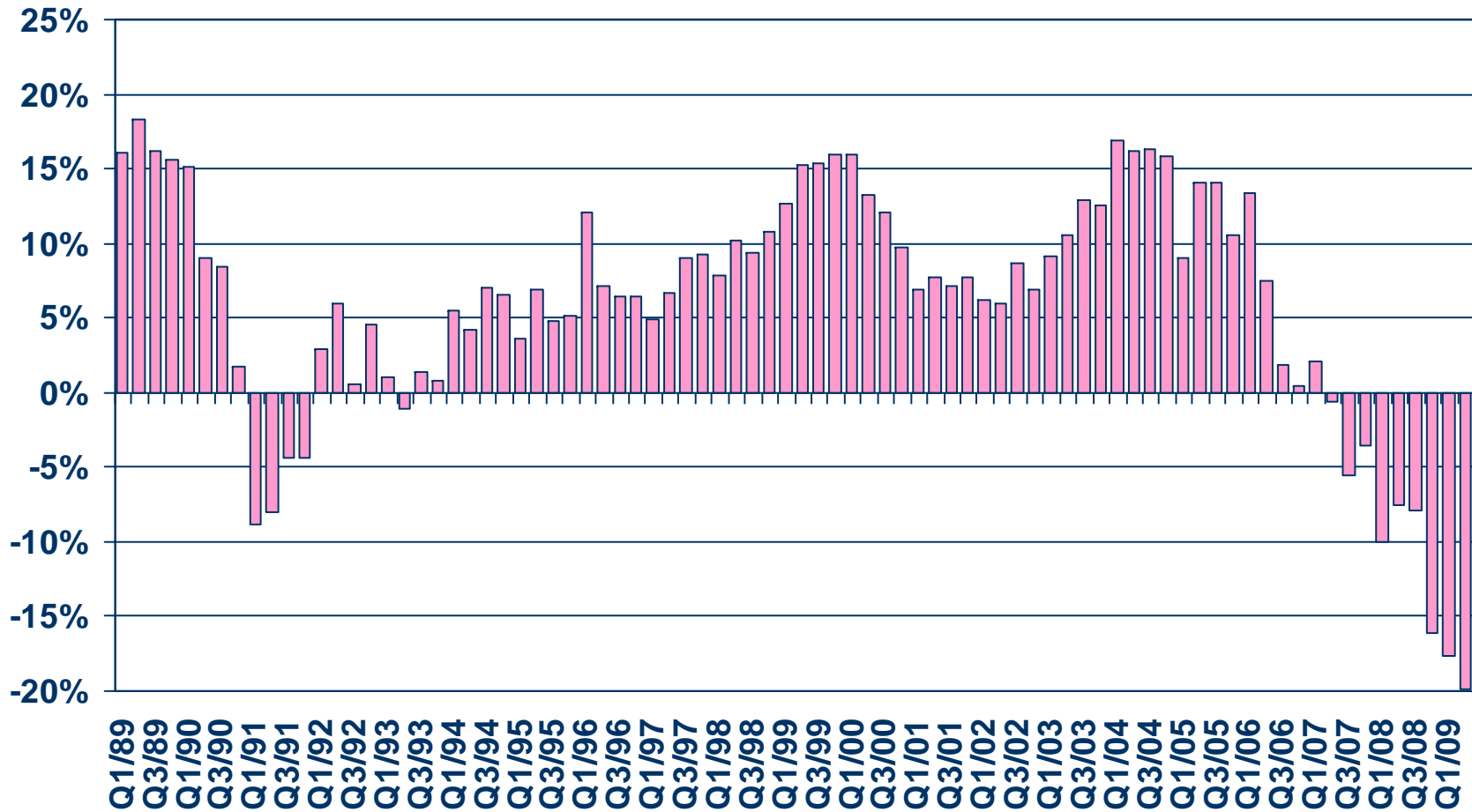
CCD Census County Division
CDP Census Designated Place



Taxable Sales

Riverside County

ANNUAL PERCENT CHANGE

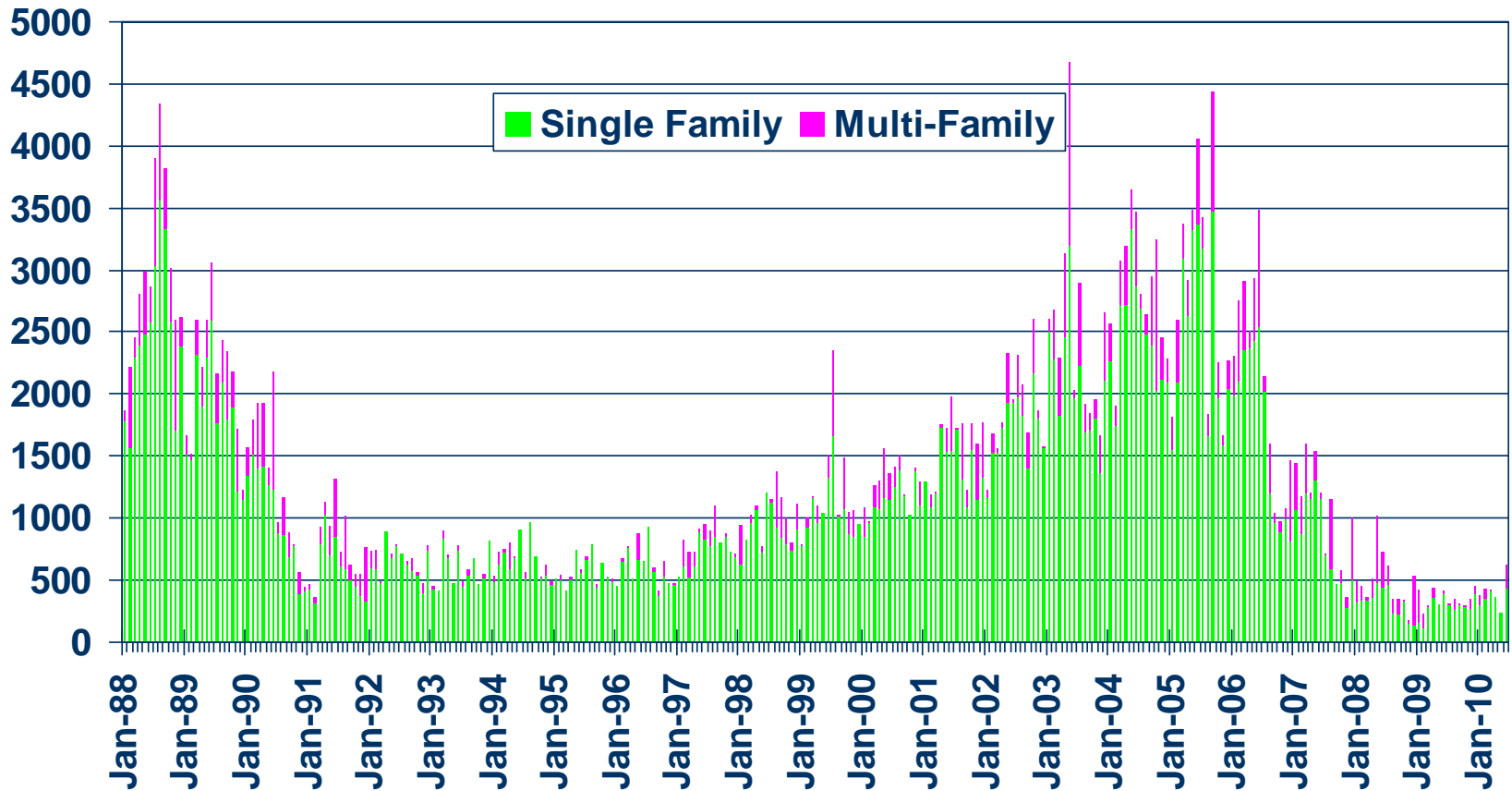


SOURCE: CA State Board of Equalization



New Housing Permits

Riverside County, June 2010: 632 Units, Up 17.0% YTD

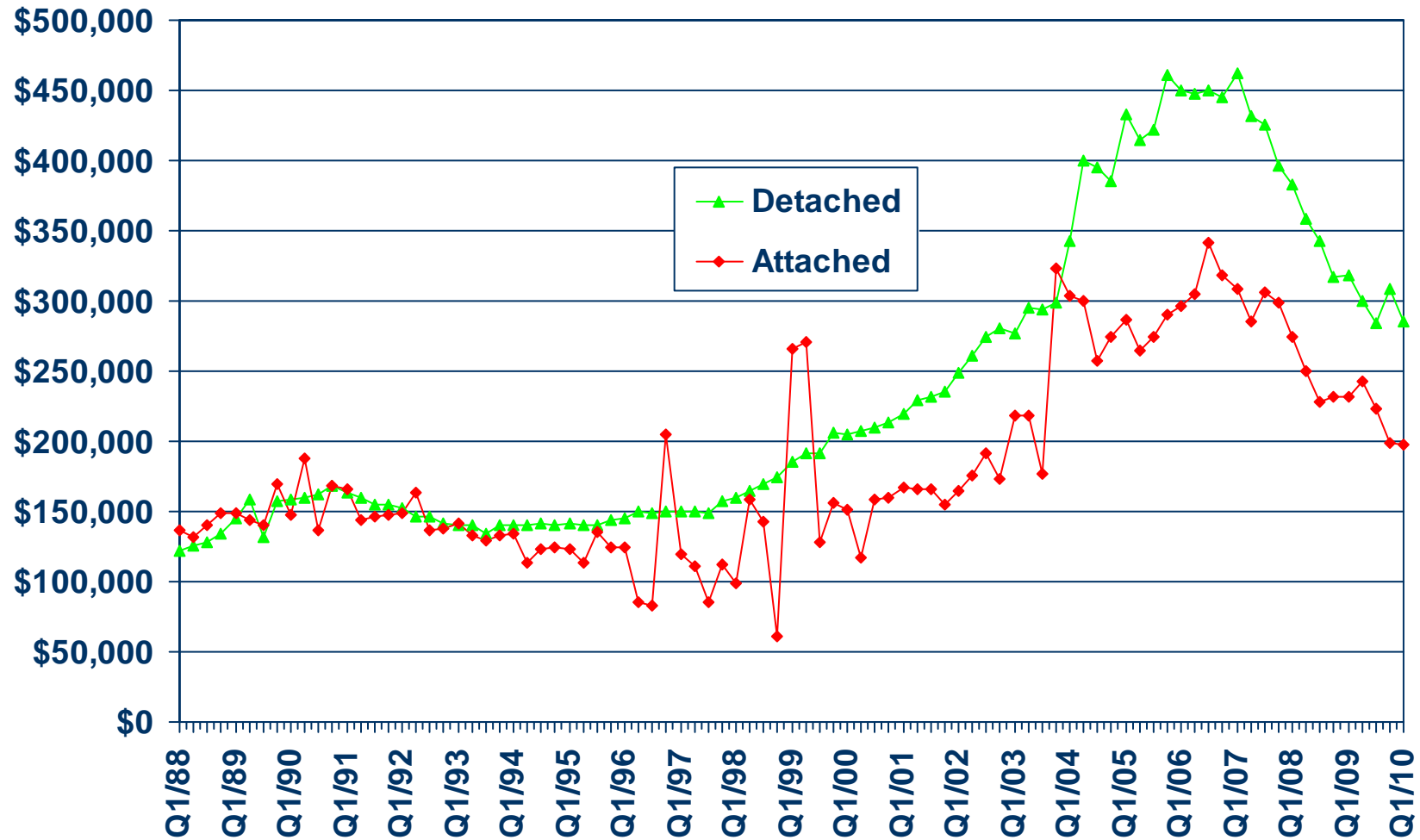


SOURCE: Construction Industry Research Board



Median Price for New Homes

Riverside County 1Q10 Detached: \$285,323, Attached: \$196,990

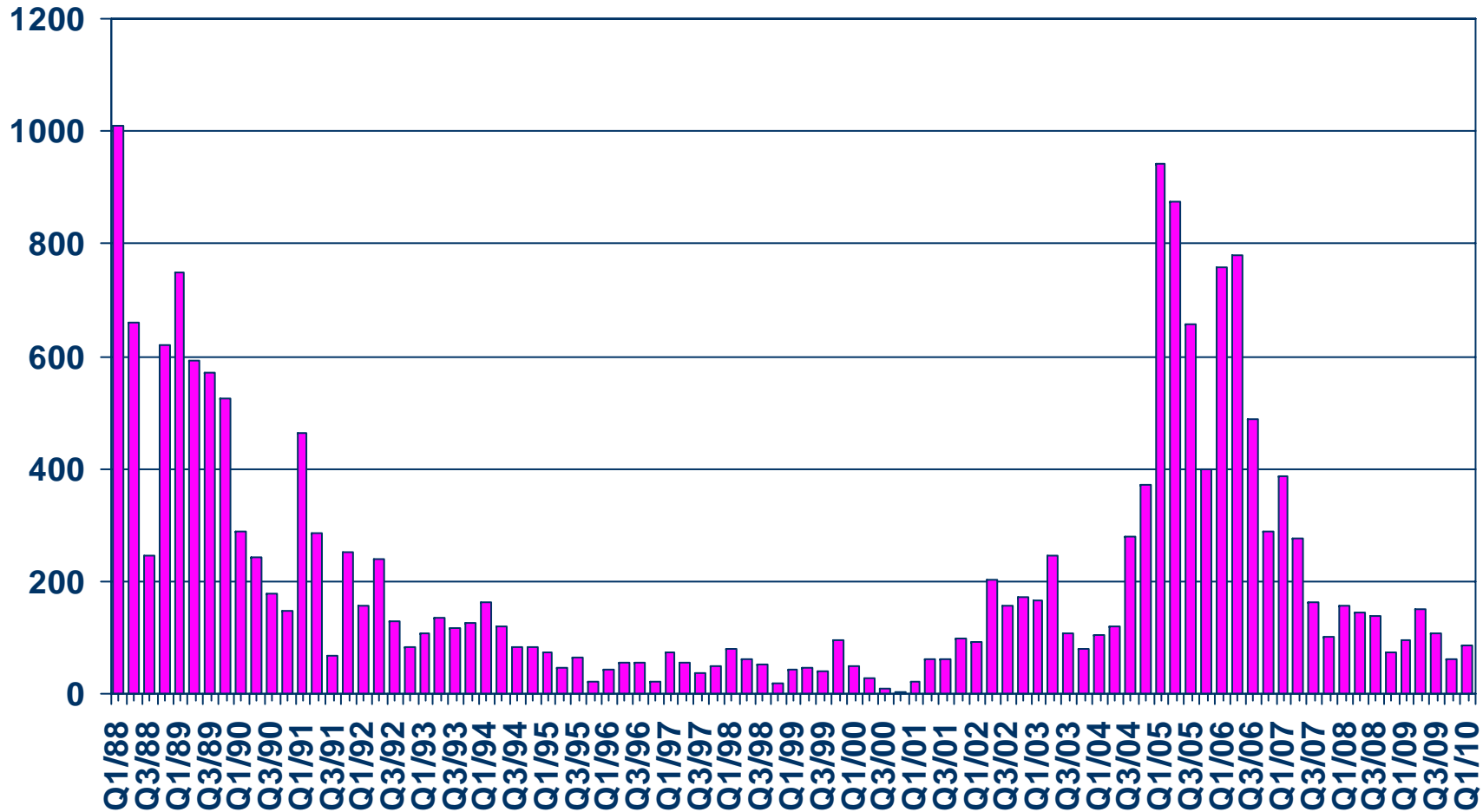


SOURCE: CALIFORNIA ASSOCIATION OF REALTORS®;
Hanley Wood



New Home Sales

Riverside County (Attached), 2010 Q1 Sales: 85 Units

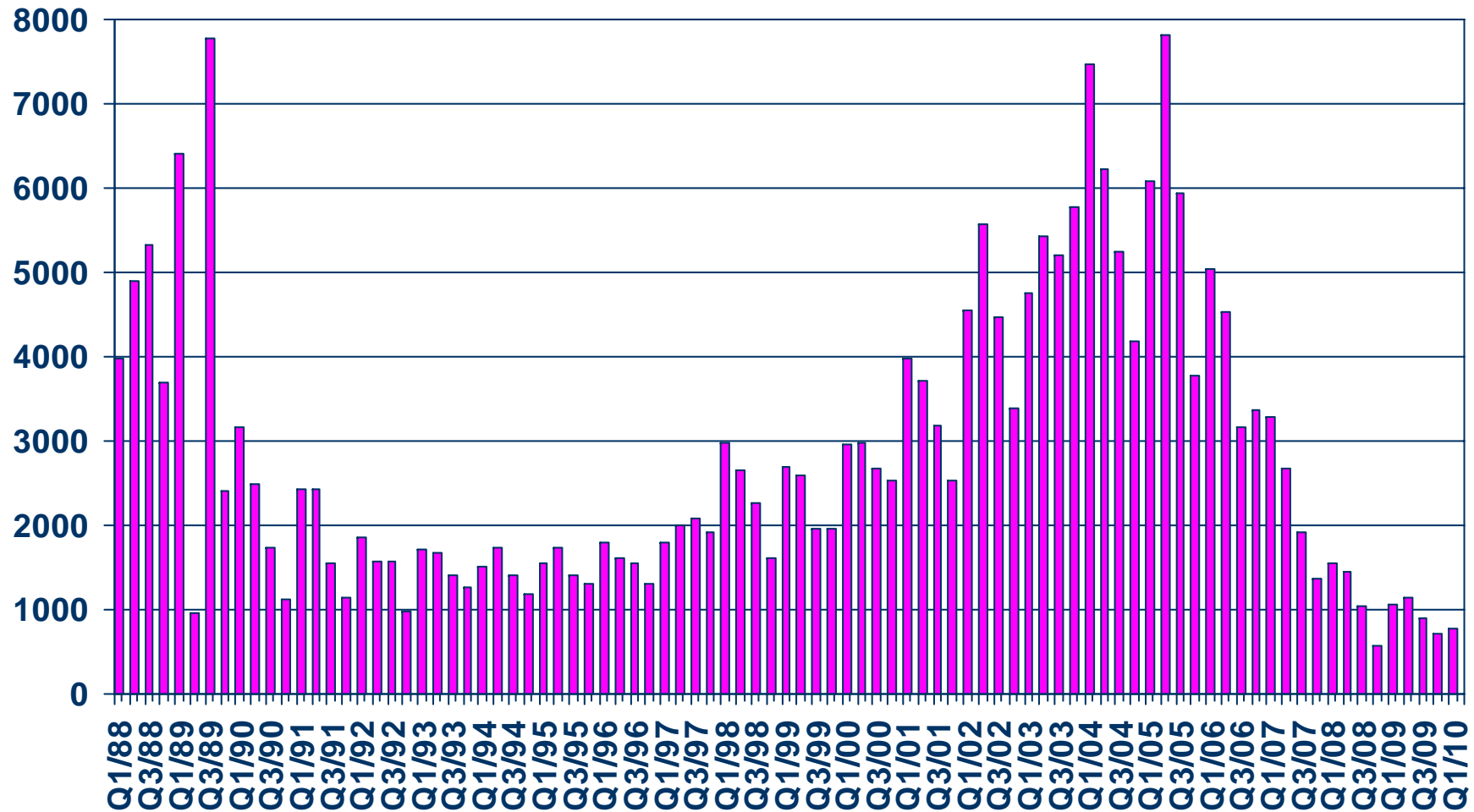


SOURCE: CALIFORNIA ASSOCIATION OF REALTORS®;
Hanley Wood



New Home Sales

Riverside County (Detached), 2010 Q1 Sales: 774 Units

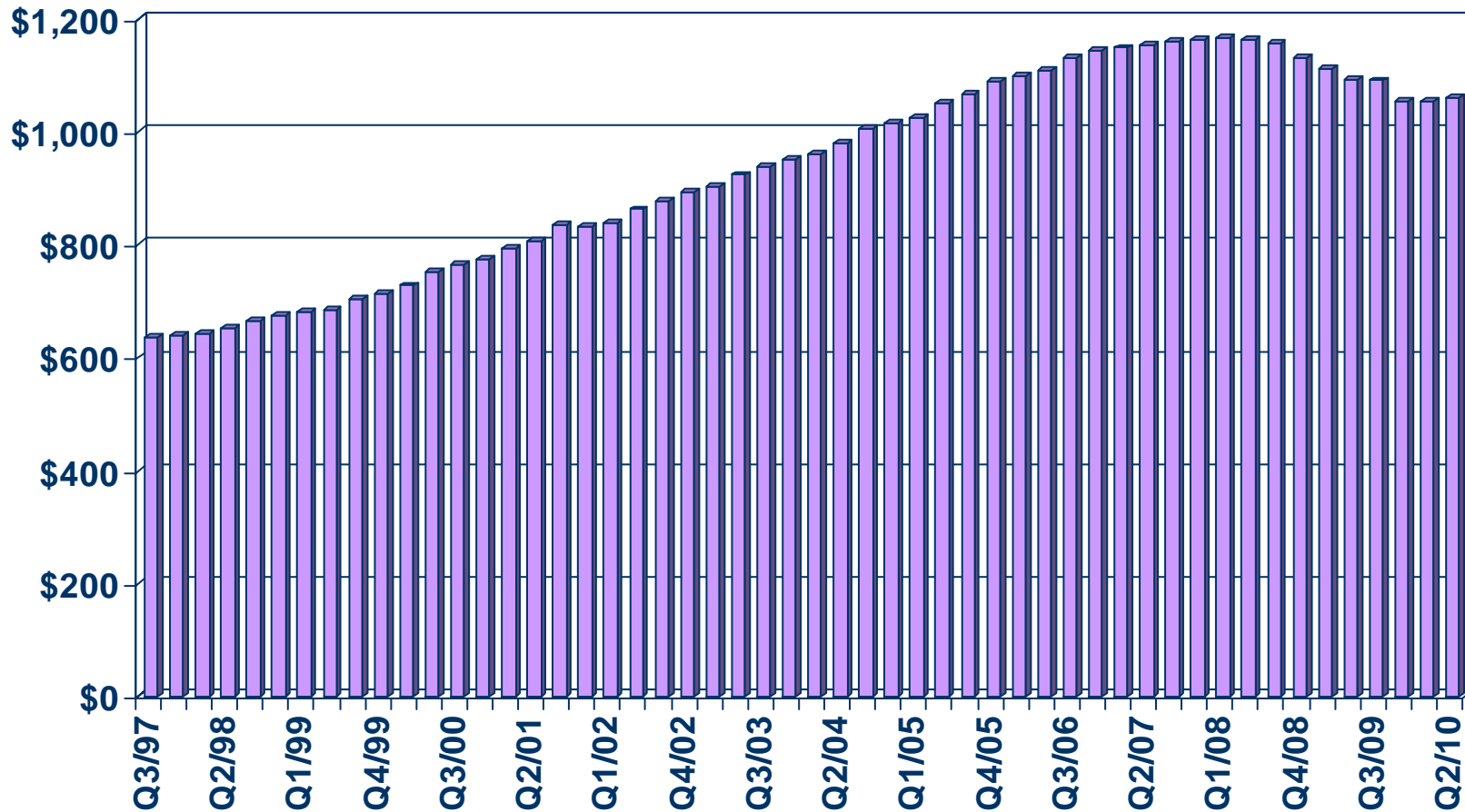


SOURCE: CALIFORNIA ASSOCIATION OF REALTORS®;
Hanley Wood



Asking Rents for Class A&B Apartments

Inland Empire, 2010 Q2: \$1,060 Down 3.0% YTY



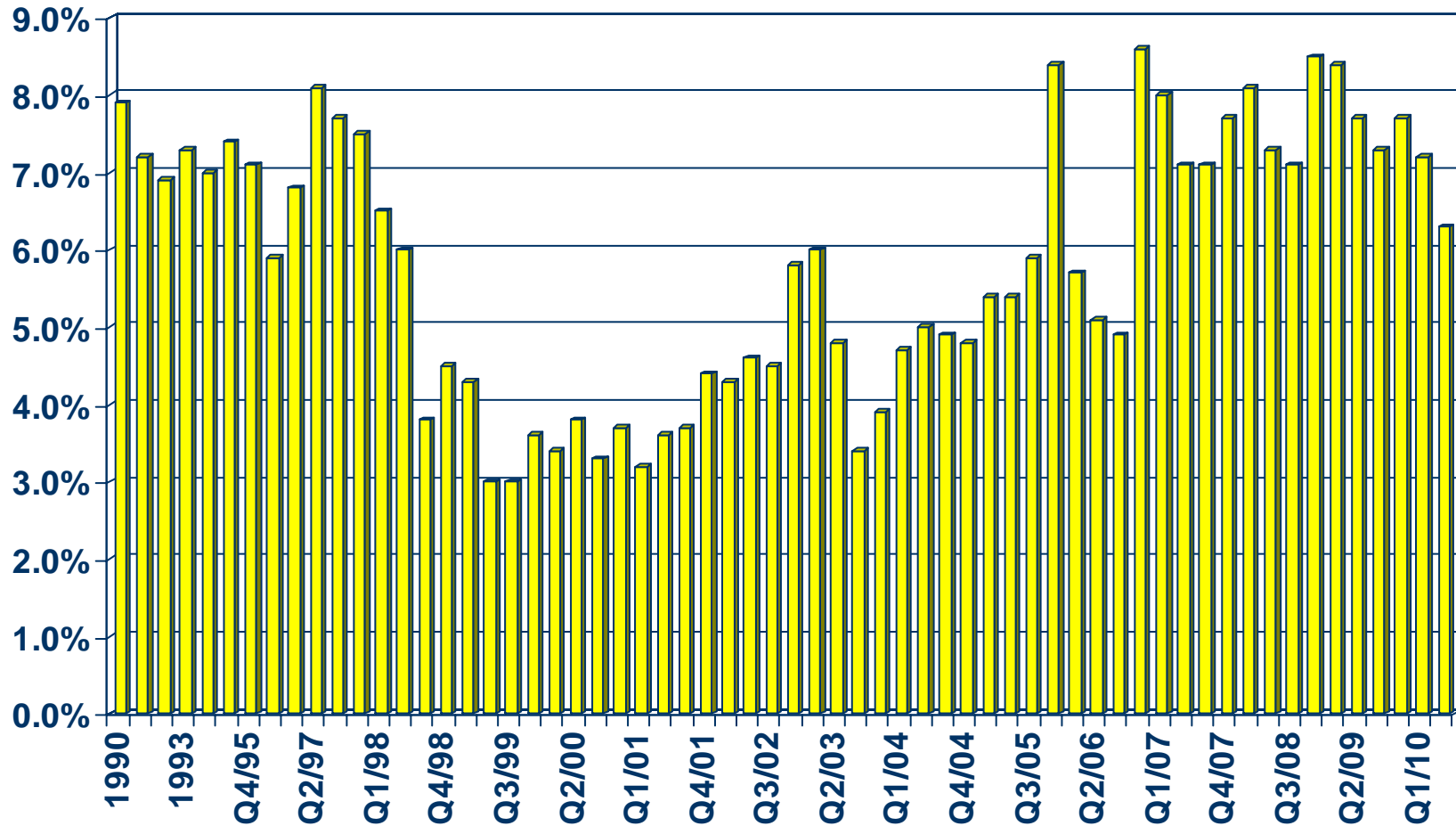
SOURCE: CALIFORNIA ASSOCIATION OF REALTORS®;
REALFACTS



Vacancy Rates for Class A&B Apartments

Inland Empire, 2010 Q2: 6.3%

VACANCY RATE

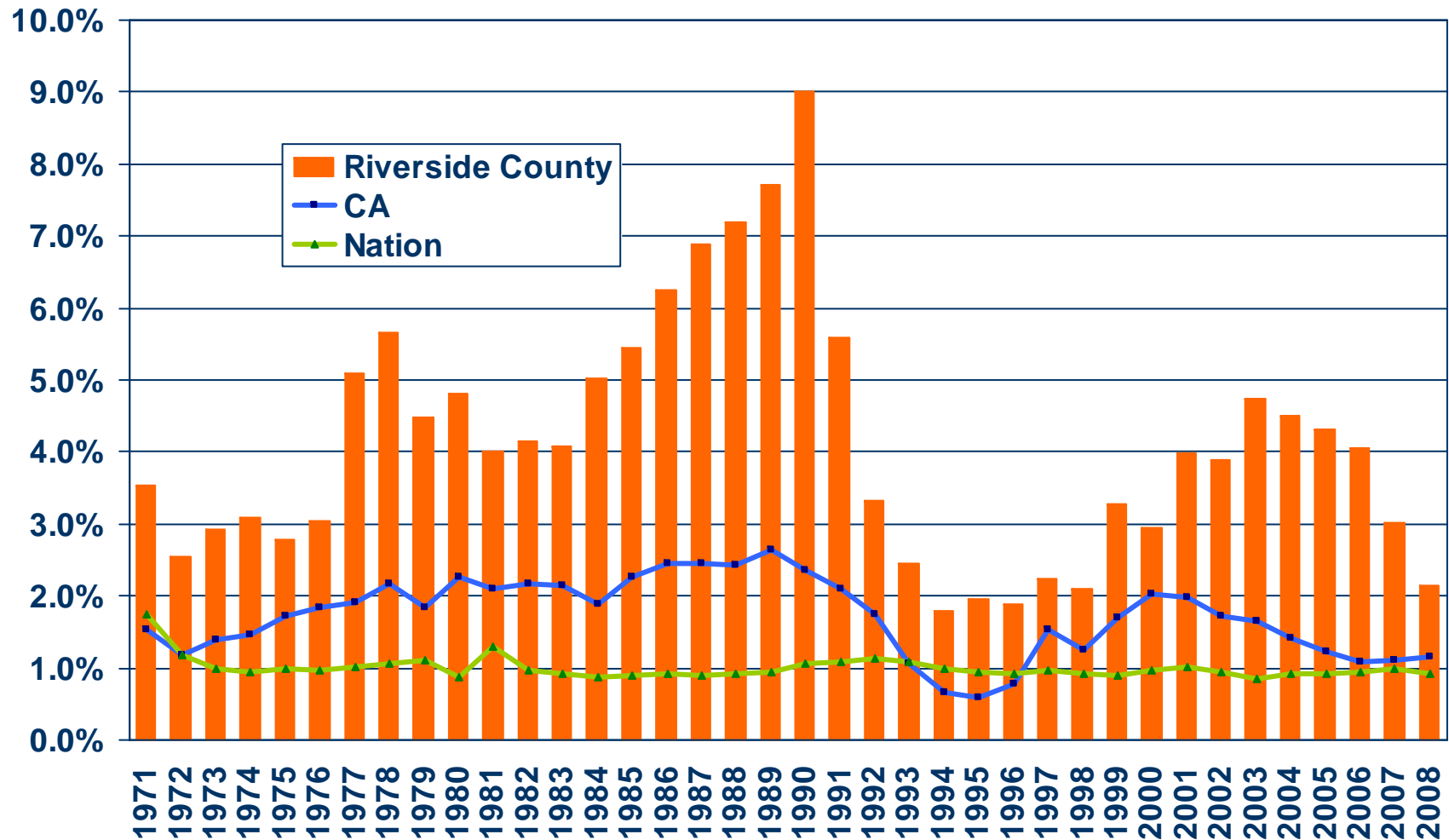


SOURCE: CALIFORNIA ASSOCIATION OF REALTORS®;
REALFACTS



Population Percent Changes

Riverside County (1971-2008)



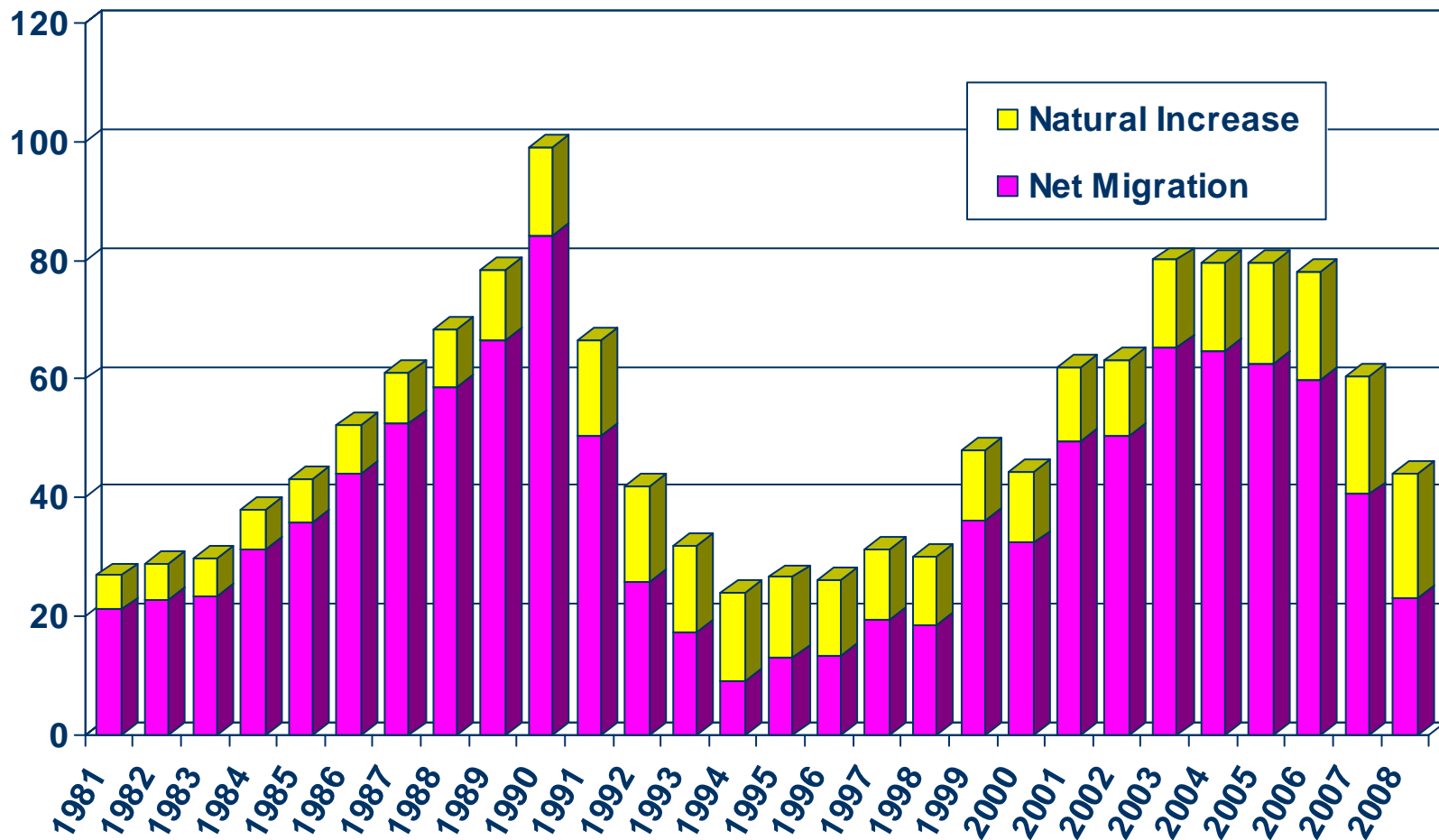
SOURCE: U.S. Census Bureau;
 California Department of Finance;
 CALIFORNIA ASSOCIATION OF REALTORS®



Sources of Population Growth

Riverside County (1981-2008)

THOUSANDS

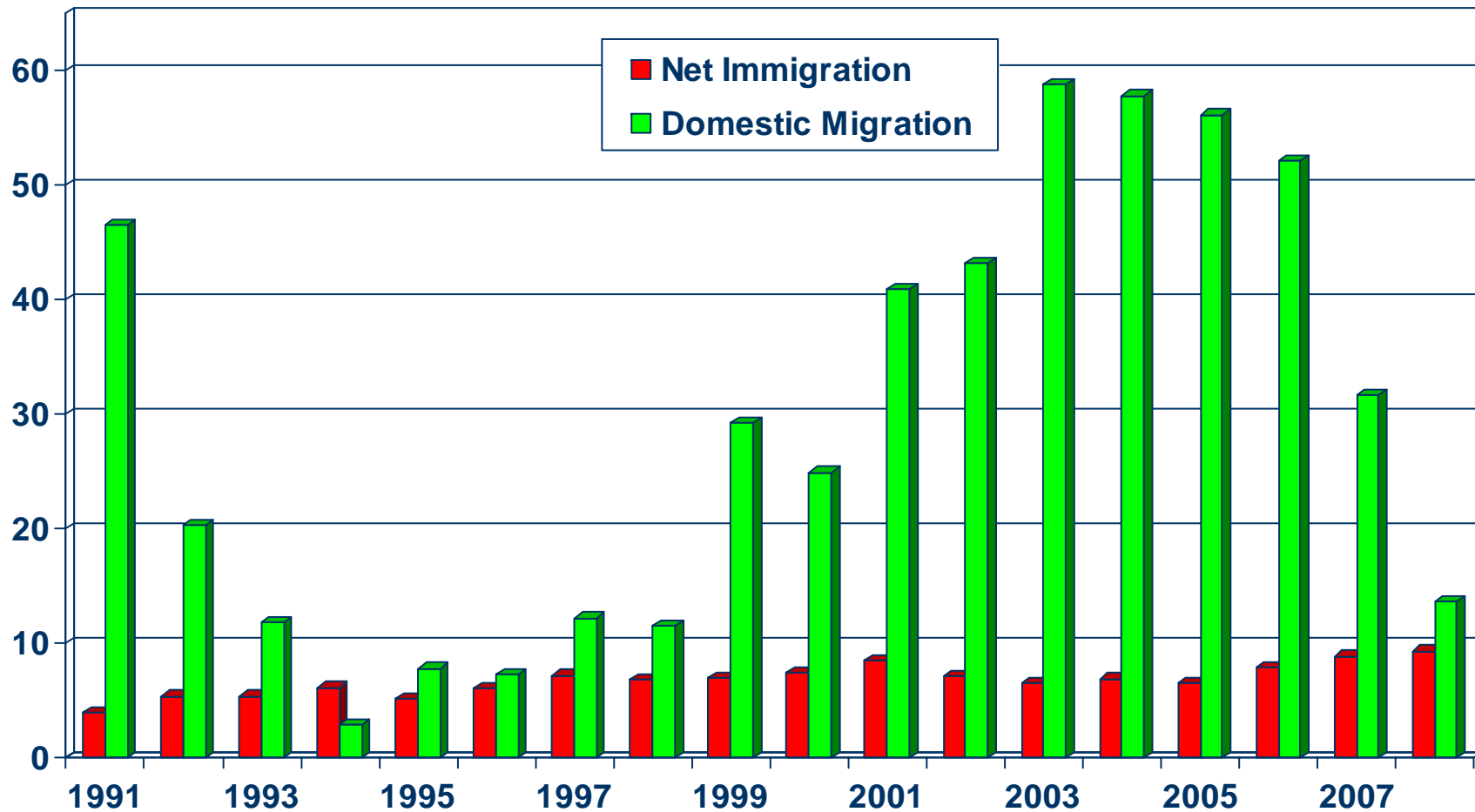


SOURCE: CA Department of Finance

Net Immigration Vs. Domestic Migration

Riverside County

THOUSANDS



SOURCE: CA Department of Finance

Household Relocations

Riverside County

County	Outflow	Inflow	Net Outflow
San Bernardino County, CA	7,330	9,914	(2,584)
Orange County, CA	6,165	6,970	(805)
Los Angeles County, CA	5,794	9,442	(3,648)
San Diego County, CA	4,706	4,682	24
Clark County, NV	959	728	231
Maricopa County, AZ	901	612	289
Imperial County, CA	488	339	149
Ventura County, CA	330	332	(2)
Kern County, CA	301	259	42
Santa Clara County, CA	259	271	(12)
Total-Top 10	27,233	33,549	(6,316)
All Migration	42,086	44,893	(2,807)
Total Number of Households			621,197
Top 10 as % of All Households			-1.0%
All Net Mig as % of All Households			-0.5%

Source: NAR Relocation Report 2008 – IRS Data; Item 187-06065, US Census Bureau



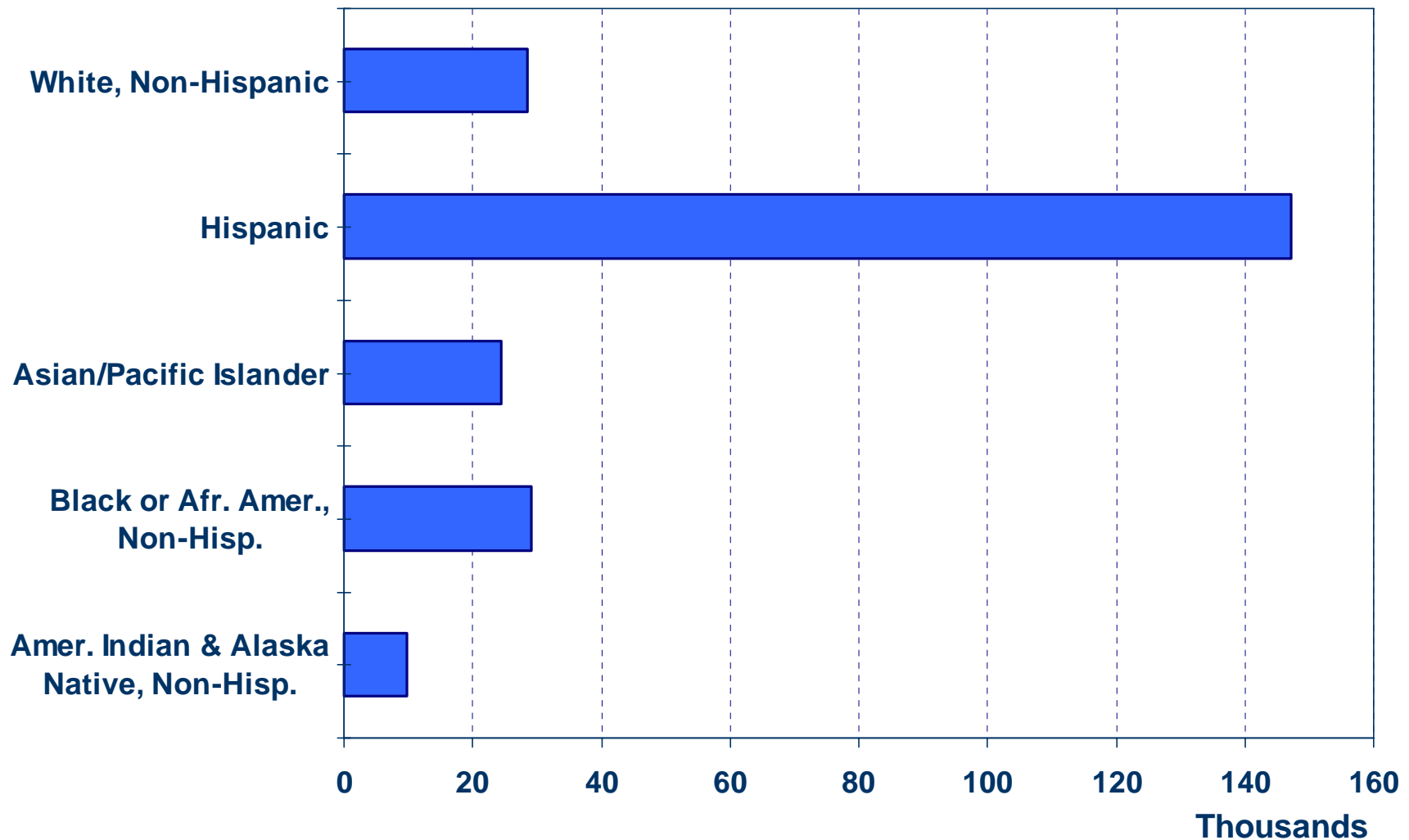
Where are new Riverside County households coming from?



- San Bernardino (9,914)
- Los Angeles (9,442)
- Orange County (6,970)
- San Diego (4,682)
- Clark (728)
- Total incoming for 2008: 44,893
- Total outgoing for 2008: 42,086

Net Immigration by Ethnic Group

Riverside County (1990 Census to 2000 Census)

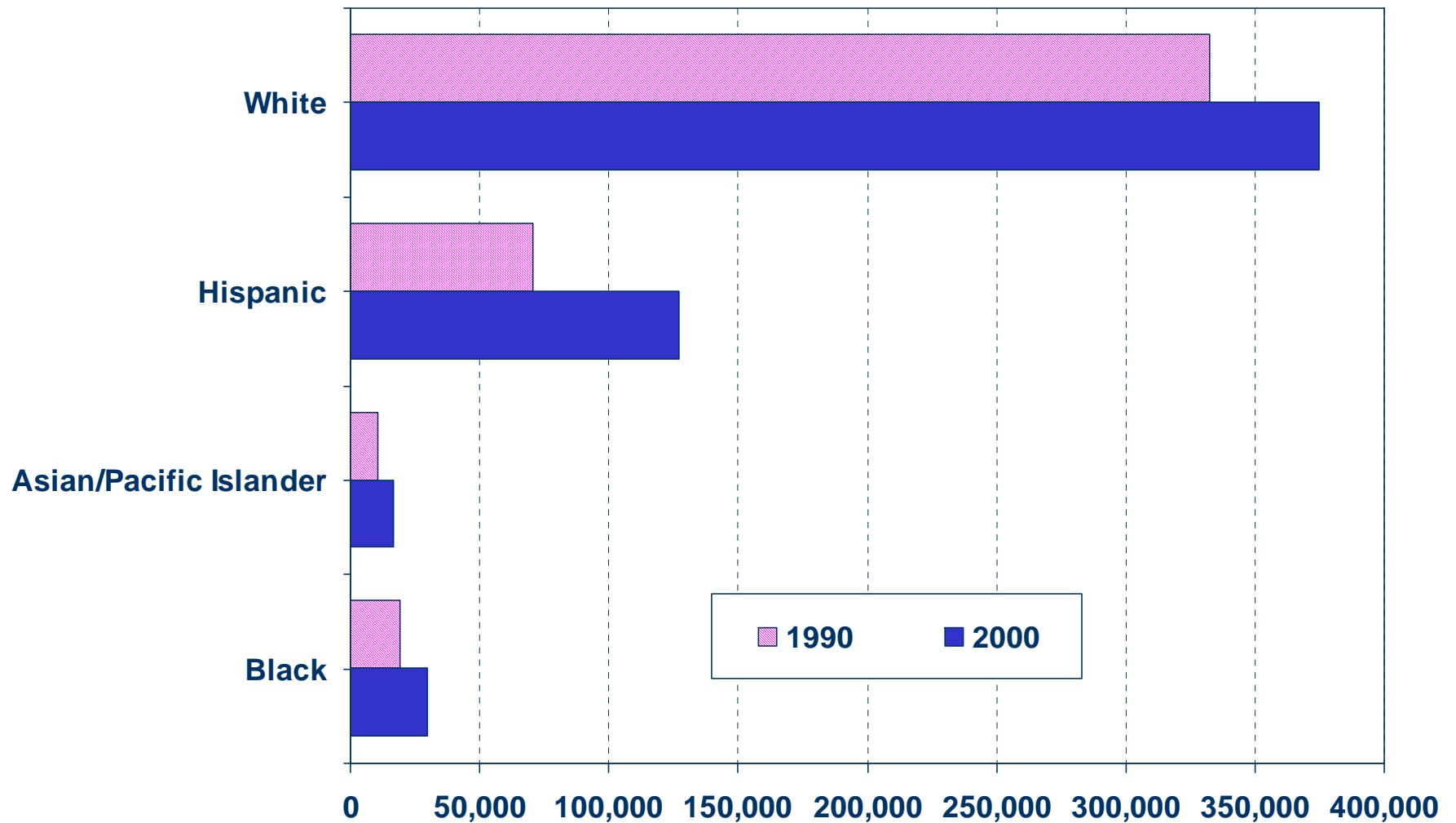


SOURCE: CA Dept. of Finance



Number of Households by Ethnicity

Riverside County (1990 Census vs. 2000 Census)

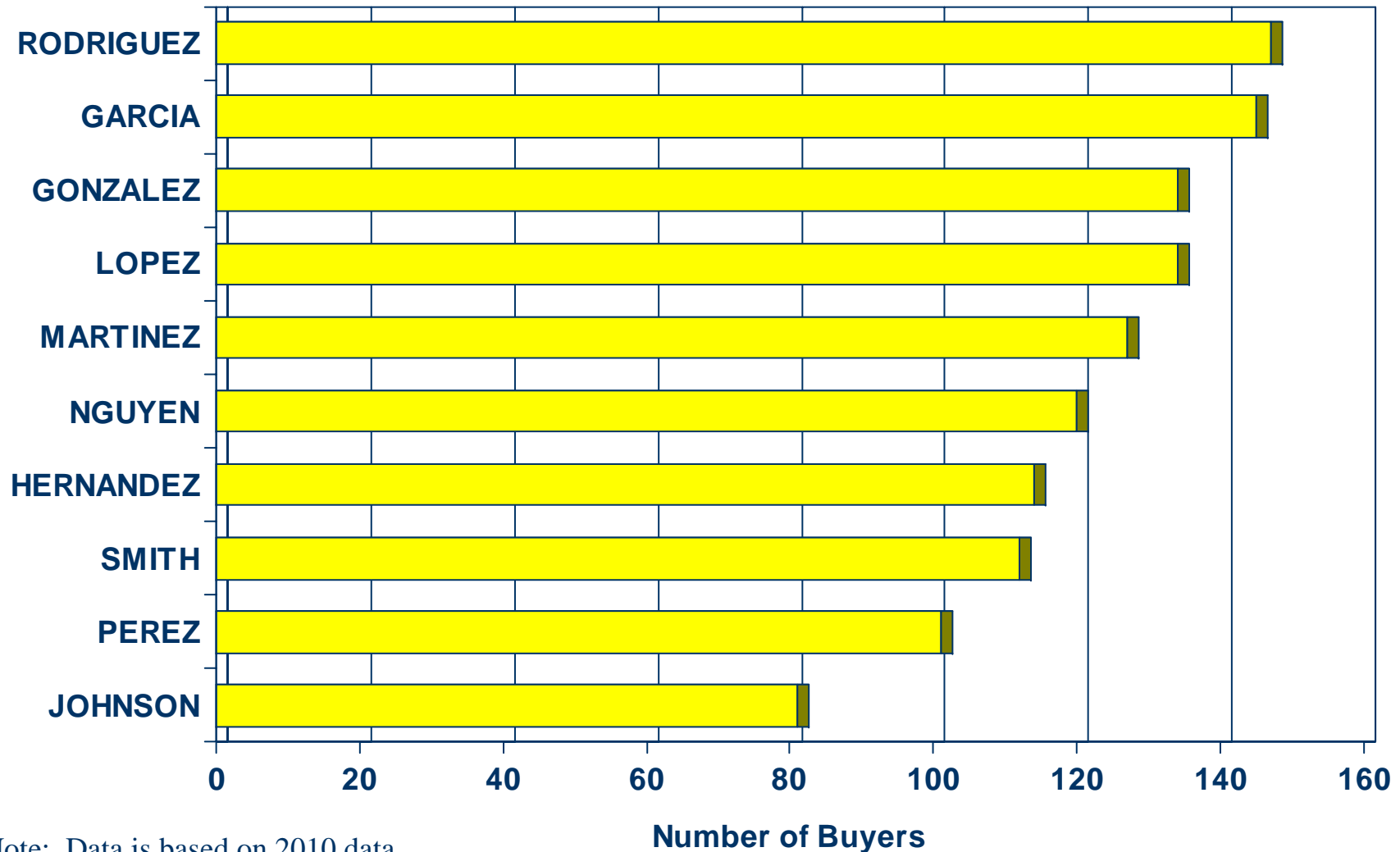


SOURCE: U.S. Census Bureau



Top 10 Home Buyer Surnames

Riverside County



Note: Data is based on 2010 data.

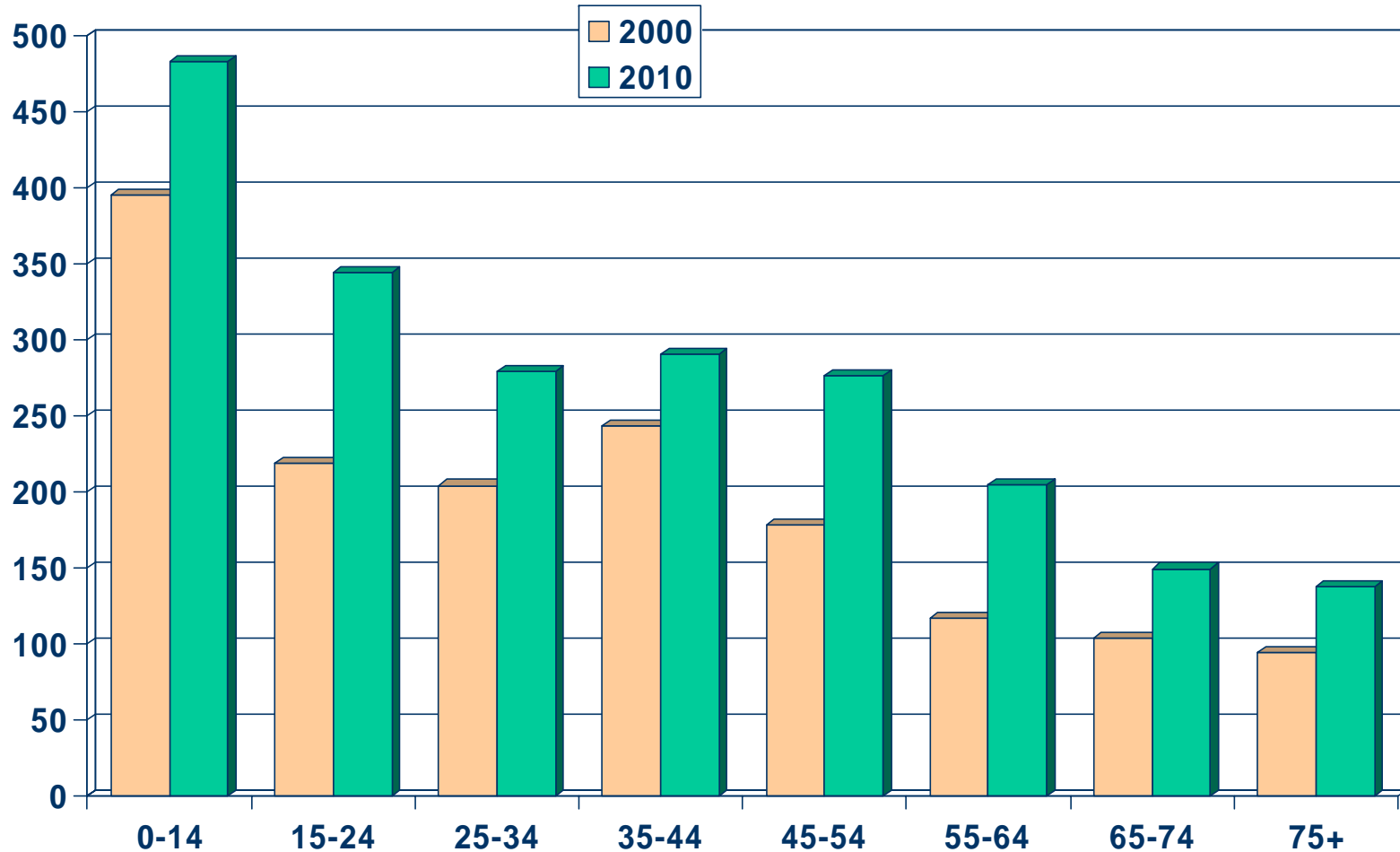
SOURCE: DataQuick Information Systems



Population by Age Group

Riverside County (2000-2010)

Thousands

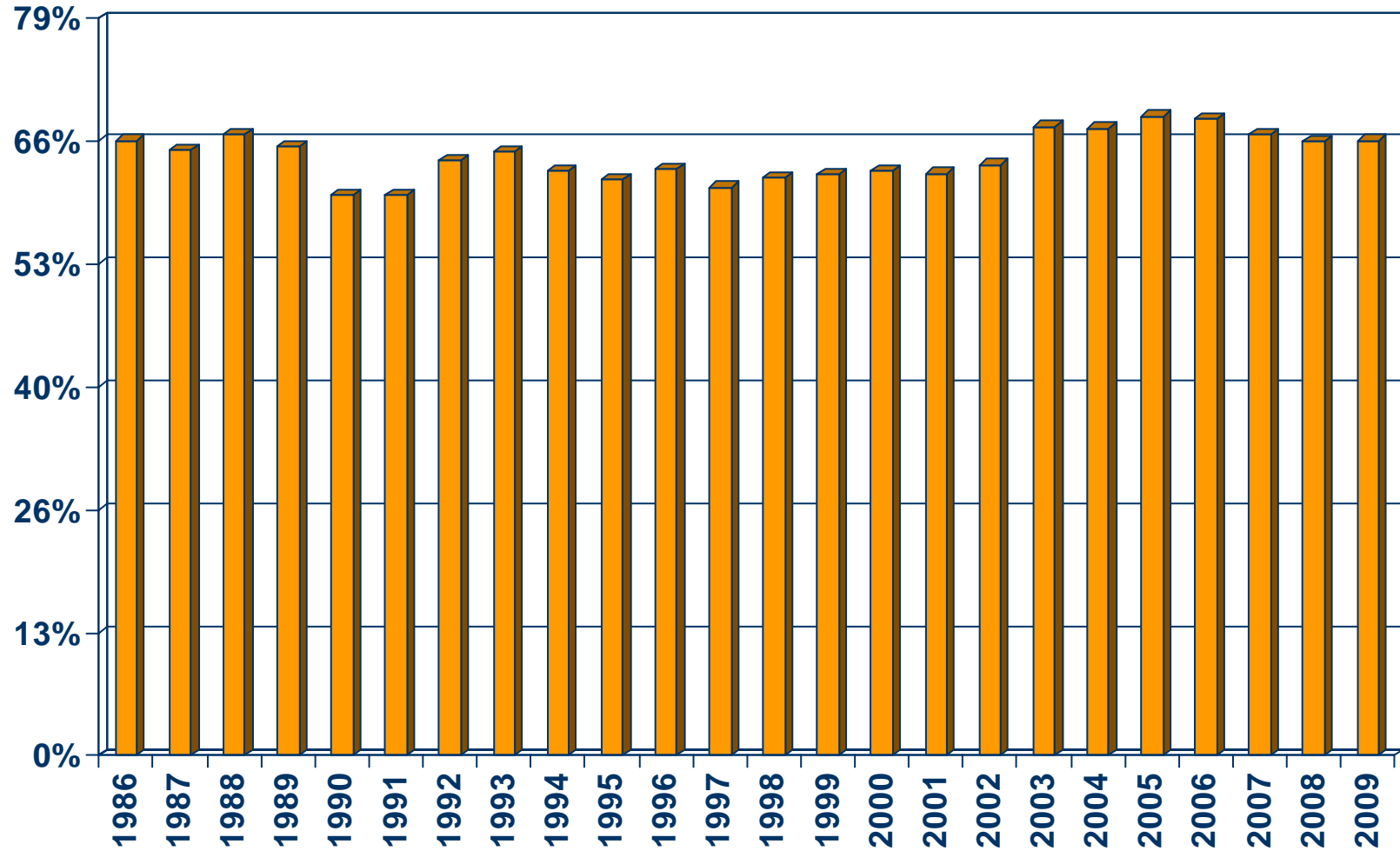


SOURCE: California Department of Finance;
CALIFORNIA ASSOCIATION OF REALTORS®



Homeownership Rates

Riverside-San Bernardino Metropolitan Area, 2009: 65.9%

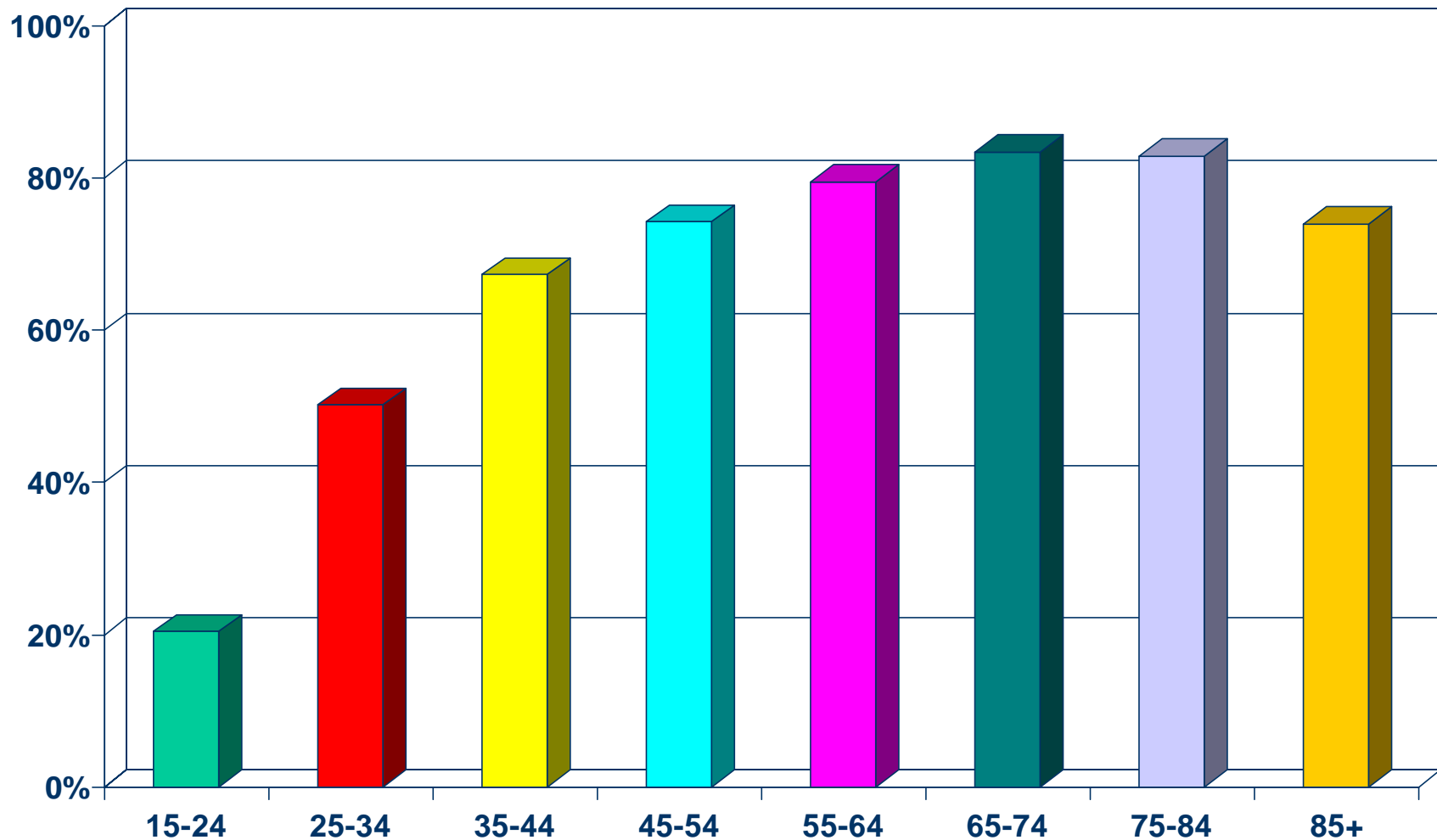


SOURCE: U.S. Census Bureau



Homeownership Rates by Age

Riverside County (2000 Census)



SOURCE: California Department of Finance;
CALIFORNIA ASSOCIATION OF REALTORS®

